

November 2022

# THE BUNK

## In this issue:

- Murder most foul
- Light, sound, music.....
- Flaggging down The Queen
  - Aquatic dogs
- That Yuletide feeling  
...and much more!



Parish magazine of Four Elms, Hever and Markbeeceh

£1

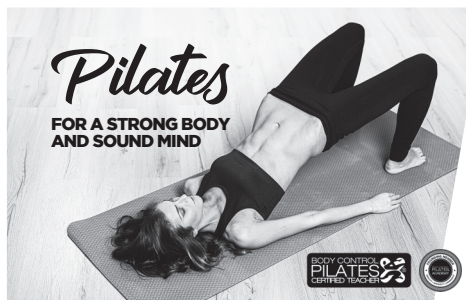
# GORARD DEAN *Catering*

All events undertaken from  
birthdays, christenings and anniversaries  
to celebration of life teas

mob: 07710 005 635  
email: [melanie\\_dean@gorarddean.com](mailto:melanie_dean@gorarddean.com)



Melanie Dean  
PROPRIETOR



It is a method of exercise that  
combines both physical and  
mental conditioning that  
leads to a strong body and  
sound mind.

**"In 10 sessions you'll  
feel the difference,  
in 20 you'll see the  
difference, in 30  
you'll have a whole  
new body"**

Joseph Pilates

*I am a qualified Level 3  
Body Control Pilates  
Matwork teacher offering  
small group classes or 1:1  
sessions for beginners or  
advanced level students.*

*The principle of the Body  
Control Method is to make  
the benefits of Pilates  
available to all through high  
quality teaching that is both  
safe and effective.*



**FOR CLASS TIMES AND AVAILABILITY:**

**Tel: 07747 628 993**

Email: [pilatesbylorna@gmail.com](mailto:pilatesbylorna@gmail.com)

Facebook: [pilatesbylorna](https://www.facebook.com/pilatesbylorna)

## Stuart Rieman

Mercedes Benz Specialist

BMW

VW Audi

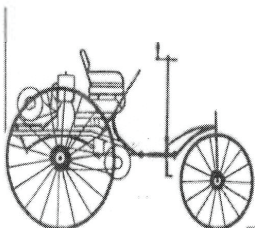
Porsche

TEL: 01883 715037 & 07831250850

Workshop 2, Little Foxes Farm

Roman Road, Edenbridge TN8 5PN

[stuart@rieman.co.uk](mailto:stuart@rieman.co.uk)



Luxury Passenger Car Servicing & Repairs

VAT No. 219 3359 57

# Welcome to the November Link

# THE LINK

Today the spiders are acting as their own grappling hooks, throwing tightropes from tree to tree, demonstrating that they can do horizontal as well as vertical, the acorns are fat and turning brown, and it is raining!

I often write about birds, but here is a rather beautiful moth, the magpie moth, which I have never seen before although it is apparently common throughout the UK. This got me thinking about the difference between butterflies and moths. They come from the same Lepidoptera family and the key difference is that butterflies are active during the day and hang under a leaf with their wings folded vertically at night. Moths are the exact opposite.

The website "sciencefocus.com" reminds us that "unlike Icarus, these creatures aren't newly excited about their flying skills – they've been at it for hundreds of millions of years" - but this means that they haven't yet evolved an understanding that candle light, let alone artificial light, is not friendly. Many think

that moths mistake artificial lights for the moon and are drawn to them for this reason. Let's hope they learn to steer clear one day.

As the autumn draws in, there is plenty to look forward to - the Hever Christmas Fair and the film club in November, and the concert in Hever Church on Saturday 3 December which will feature quite a few local musicians and readers. More events are listed on the back cover.

Finally, we are very grateful to Charlotte Hart for designing the Link whilst Paul Houlton moves house.

Joanna Wade



## pet of the month

### River the Newfoundland dog

10 things we love about our Newfie:

**1.** She is a natural born swimmer. Her webbed feet and her rudder tail make it easy for her to venture herself in any water. She sometimes sneaks in at the castle and has a swim, but her real love is the sea diving through waves.

**2.** She loves the family so much that she is happy to share her bones with us and she needs to say hello to everyone who wants to talk to us.

**3.** She takes us places. She really does! Every morning, no matter the weather, and she always suggests beer and chips at the pub.

**4.** She makes friends everywhere (except burglars - she ate 2 already). She loves to say 'hello' to people and dogs, but she's not so keen on cyclists. Please don't enter the garden unannounced, she takes her protective job seriously.

**5.** She talks to us. Seriously, we just need to listen. She comes up with some great ideas. No bone cuts for dogs and everyone should have a dog. It's good for your heart.

**6.** She supervises the gardener for us. Trouble is, it took her a while to understand why the gardener can go in the flower beds and she was not allowed to.

**7.** She loves to play football. Her nickname is: Rivealdo. She is excellent at tackling, heading, saving and has excellent footwork. If there was a dog football team, she'd be the captain.

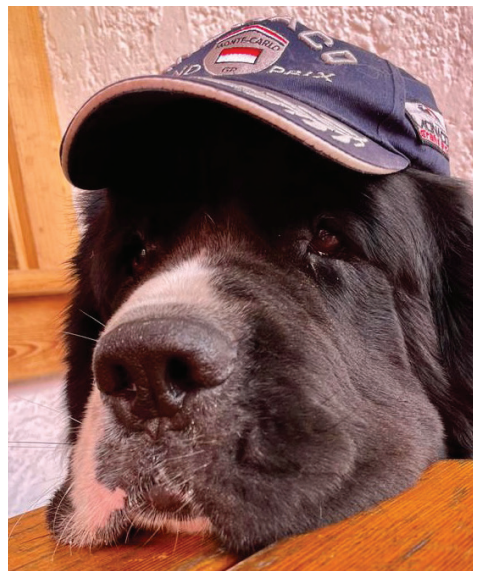
**8.** She has an elegant walk, almost like a tiger, we've been told, with a real swagger.

**9.** She gives great cuddles. She's not a lap dog, no. She's not even allowed on the sofa, for obvious reasons, but she is happy to sit and likes it when we put our arms around her.

**10.** She's relaxed. She sleeps most of the day and lets us get on with our human jobs, to only perk up at about noon, just like an AppleWatch and announces 'master, it's time to go for a walk'

Yes, yes, I hear you saying: 'There is the slobber, the fur, and how much does she eat?!' Those things are trivial compared to the love she gives ;-).

by Ana, Daryl and Darrell



## what we do

### What we do - Campanology at St. Peter's, Hever

"Look to.....Treble's going.....she's gone!" A new language, a new skill ....how can something that looks so simple and elegant be so difficult to master? Mahala & I have been learning the ropes in St. Peter's every Thursday since July.

Making our way up into the bell tower is rather like climbing up to the deck of a very old ship. The shallow oak steps seem almost vertical you do feel the history of the Church in every step up. Our Tower Captain, Jane Rosam, introduced us to our trainers Richard & Steph, who along with the other regulars made us feel very welcome. Mahala has been collecting bells over many years, including cow bells from the French Alps, but nothing of the size that we now try and master at St. Peters.

Every week we feel like we may have made some progress on the 4th bell, all of 51/4 hundred weight tuned to the note of C. Then all of a sudden, without warning, the sally and the rope become uncontrollable and the rope slaps you around in a very unforgiving way, so Richard steps in and seems to get the bell back into its natural swing. The hardest part seems to be 'parking' the bell in the mouth up position.

If that wasn't bad enough, we then have to tie a particular type of knot used to keep the rope in a loop and lifted off the floor. No matter how many times we tried it at home we both really struggled to put it into practice back in the bell tower.



When you hear the ringers doing it well, it's a magical experience. Their accuracy and skill leave one in awe. Mahala & I are both hoping that by this time next year we will have got the hang of it and be able to join in a peel in perfect time.

We ring every Thursday at 8pm, for an hour, followed by a pint in The Henry VIII.....good for the brain, good for the body and good for the community, come along and give it a go (or email [janerosam@gmail.com](mailto:janerosam@gmail.com)).....you absolutely won't regret it.

### Mahala and Bob Turnbull



Bob concentrating hard



### **Royal British Legion Standard Bearer at the funeral of Her Majesty Queen Elizabeth II**

James Castle, the Standard Bearer of Cowden, Hartfield and District Branch – Royal British Legion was one of 72 who were handpicked by the RBL National Parade Marshal to attend the funeral of Her Majesty the Queen on 19th September 2022.

The Standard Bearers assembled at an hotel in Marble Arch on the Wednesday before the funeral and were soon put through their paces. Their first briefing was at 6.30 that night, followed by a muster at 9.30pm and they finally marched into position at the Cenotaph at just after 2am for the rehearsal. "It was very eerie at that early hour to see all the different units marching past in the gloom. The sound of the muffled drums was particularly haunting" says James. The following days were interspersed between kit inspections, hours of shoe cleaning, a little bit of sightseeing and drill practice in the hotel basement.

The day of the funeral began with multiple alarm clocks at 5am followed by an early breakfast. "We were on the coaches at 6.30am and the crowds were already gathering as we drove down Whitehall" recalls James. As the funeral procession began, James knew that once Her Majesty's Heralds came into his line of sight, their big moment had come. "The noise of the band opposite and the crowd behind drowned out any commands that were being called. We could not hear or see our cue, though with huge relief we soon realised that all the Standards were lowered in unison to the 'Act of Homage.' There may have been four billion people watching on television, but none of those Standard Bearers saw anything other than the ground as they all dipped their heads. "All I could see was the tarmac and my Standard. All I could hear was the very light crunch as the sailors from the Royal Navy bore Her Majesty on her final journey."

James says "This is something that I will remember for the rest of my life, and I am so grateful to be given the opportunity. I hope that my community whose name is on our Standard is proud that they too were also represented on such an incredibly humbling day."



Photograph of the standards lowered courtesy of The Royal British Legion - James is just visible in this photograph on the far right hand side.

# Out of the Darkness

*- words and music to  
celebrate the 900th  
anniversary of  
Hever Church*

*Saturday 3 December  
St Peter's Hever  
7.00 pm*

*Tickets £10  
e: [heverbocas@gmail.com](mailto:heverbocas@gmail.com)  
t: 07958 919631  
or on the door.*



## The Murder of Thomas Wilde

On Wednesday, October 2nd, 1811, at about 7pm, Thomas Wilde was on his way home from Croydon. His son George and his grandson, Thomas were with him. It was cloudy and there had been some rain. Thomas, aged 73 was driving a one horse chaise and had already driven nearly 12 miles. They were cheerful having had a successful day purchasing livestock, but they were tired and anxious to get home to Sundridge Place where they lived, still a few miles off. The sky had darkened considerably and the lanterns on the chaise offered little illumination, although there was some moonlight behind the clouds.

As they started down Betson's Hill near Westerham, they saw a man on the left hand side of the road walking towards them. He was about 5'7" or 5'8" tall and looked to be about 30 years of age. He was wearing an old greasy oiled skin hat which shielded the top half of his face. He wore a dirty, ragged smock tied close around his neck, and an old pair of long leather breeches with a pair of laced shoes. The chaise was travelling at about six miles an hour. Soon after the chaise passed by the man, Mr. Wilde heard a voice crying out: "Stop! Stop! You must stop!"

George told his father to stop as he supposed they must have lost something from the chaise, or that something was broken. They stopped and the man approached, brandishing a pistol.

"Come, come, your money. Rifle your pockets! Let's have it", he said. The young grandson, frightened, gave the man a bag but George told the robber he had come at the wrong time as they had been at the Croydon Fair and laid out all their money. The man repeated his demand. Mr. Wilde senior put his hand in his pocket and took



out a crown and offered it to the man, explaining it was all he had left. The robber immediately stepped behind the chaise and said "Lie still". At the same moment Mr. Wilde struck at him with his whip and said "Take that, you cowardly rascal!"

The robber immediately discharged his pistol at Thomas Wilde's head and he fell dead upon his son's shoulder. The murderer made his escape and George Wilde drove hell for leather down the

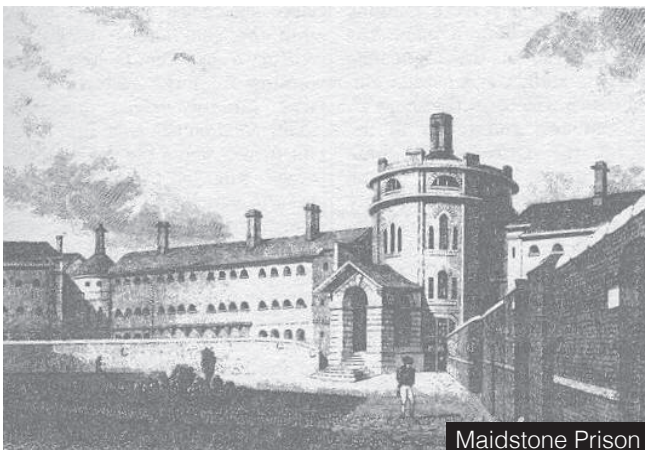
hill calling "Murder!" as he went until he came to the nearest dwelling which was a quarter of a mile away where he raised the alarm. Mr. Wilde's body was taken to the George Inn at Westerham. A doctor examined the body and found that the ball from the pistol passed through the socket of the victim's right eye into his brain and out of the left side of his skull. He fell instantly without uttering a word or a groan. He received five other shots – three to the head and two to the body. Death would have been instantaneous.

An earlier murder had occurred in 1809 when Mr. Humphries of Hever had been shot by a lone highwayman when he was returning from Westerham Fair. The police believed that both crimes had likely been committed by the same person.

A few days later a man answering the murderer's description, one Thomas Webb, alias Couchman, was arrested and charged with wilful murder.

He had marks on his face as if he had been struck by a whip. He was taken to Westerham where he was positively identified by the victim's son who had just returned from his father's funeral. Webb was examined at the George Inn, Westerham and subsequently committed to Maidstone Gaol to await trial. At the trial in Maidstone, Mr. George Wilde and his nephew corroborated each other's version of events. Neither saw the murderer's face clearly. There were several witnesses found who made contributions to the investigation but none could positively identify him because his face had been obscured by his hat. The suspect asserted that he had an alibi and as a local magistrate appeared as a witness, and swore the accused was 10 miles away at the time of the murder, the jury returned a verdict of NOT GUILTY.

**Stella Carroll**



Maidstone Prison

This year shop locally and support your community! Our Hever based craftsmen, Wendy Shapland, Tony Yates and Lottie together with other local, handpicked companies offer a great selection of Christmas gifts!



# HEVER *Christmas Fair*

GUTHRIE PAVILION, HEVER CASTLE  
**10TH NOVEMBER**  
**10.30AM-3.30PM**

**ENTRY TO FAIR £3**

**ENTRY TO GARDENS ONLY £3**

**ENTRY TO CASTLE & GARDENS £6.80**

*All profits to  
Hever Primary School  
& St Peter's Hever*



**HEVER CASTLE  
& GARDENS**

CHILDHOOD HOME OF ANNE BOLEYN

**KINDLY SUPPORTED  
BY HEVER CASTLE &  
GARDENS**

 **@HEVEREVENTS**

**SPONSORED BY  
SOUL FIT & SPA  
[WWW.SOULFITUK.COM](http://WWW.SOULFITUK.COM)**



## The Apple and the Rainbow

A concert of words and music  
for the season of autumn given by

**The Saint Martin Singers**  
with readers

**Director: Charles Talbot**



Edenbridge Music & Arts Trust Concert

**Saturday 29th October 2022**  
**3.00pm**

**Holy Trinity Church, Crockham Hill**

Tickets £15.00

Available from the Secretary  
on 07821683482, or the website  
[www.edenbridgemusicandartstrust.org.uk](http://www.edenbridgemusicandartstrust.org.uk)  
or from Mandy Maple on  
01732 863144

The proceeds of the concert will  
be in aid of Holy Trinity Church and  
Edenbridge Music & Arts Trust

### VILLAGE SCREEN FILM CLUB 2022/23

The film season begins in November at  
the usual venue, Hever Castle Golf Club.  
Our first film will be:

**Friday 18  
November**

**King Richard**



The fascinating and dramatic story of  
Richard Williams who raised two tennis  
stars: Venus and Serena, overcoming  
many obstacles along the way

**Save these dates in 2023 for more  
films:**

Friday 13 January - Twelve Angry Men  
Friday 10 February - Foul Play  
Friday 10 March - The Duke

The films (all less than two hours long)  
start at 7.30 and doors open at 6.30 for  
the pre-show meal and bar - with ice  
cream in the interval.

Tickets are a suggested donation of  
£2 for the film or £15.50 to include the  
meal - scampi and chips. You can book  
with Bridget Harris on 01732 700986  
or [bcharris@btinternet.com](mailto:bcharris@btinternet.com) or buy  
tickets at the door. However please  
pre-book your meal by the Wednesday  
before the show if you would like to eat.



We are very sorry to report that Don May whose early life we covered in the Link in May 2019 died on September 22nd aged 97. His was a remarkable innings, born in a house a mile from the nearest road weighing in at 2lbs 9oz, with a wartime career as a dog handler in mine detection and a lifetime's work on the railways. He was a truly decent and good man.

## Christmas Post



### Hever Parish Christmas Post

Send your Christmas cards to your neighbours postage free - and carbon neutral!

The deliverers walk, ride, cycle or drop off en route to elsewhere to get your cards to their destinations in good time - just put them in the blue box at Brocas opposite Brocas Road - and leave the rest to the people (and their dogs and horses!).

The box opens on Monday 14th November and the last post leaves at 4pm on Friday 23rd December.

## Farewell from Tim and Mary Boyle

We came to Markbeech in 1966 and have spent 56 very happy years in this beautiful village and last year celebrated our Diamond Wedding. We have brought our family up and as with any family have had births and deaths and have had bad times, hurricanes and electricity cuts and other difficulties as well as happy, peaceful, wonderful times.

We are very sad to leave but we are so lucky to have been offered a granny annexe very close by at Withyham, where our son and daughter in law live with their family. We hope to come over to Markbeech often and hope you will visit us in Withyham. We want to thank everyone for their friendship and kindness during our time here and for the very many happy times we have

spent – many of which have been in the village hall. Where has all the time gone! We hope all goes well with all of you and will miss you.

**Tim and Mary**



## Anna Chaplaincy

I was commissioned by Bishop Jonathan as an Anna Chaplain in September – only three days after he was inaugurated as the new Bishop of Rochester. It was great to know that Bishop Jonathan shares the deep commitment that his predecessor James Langstaff had in valuing ministry among older people and the role of an Anna Chaplain is amongst older people, their carers and those who live with dementia. They offer both support and spiritual care to people of strong, little or no faith, working across all denominations.

Anna Chaplaincy is a national concept but it is intended to be local and based in the community. As the numbers of Anna Chaplains grow (four more were licensed alongside me - and there are now well over 200 nationally), it is good to think that they will become as synonymous with spiritual care and support of older people as Macmillan nurses are for cancer care.



The Lake at Hever Castle

The meaning of the title 'Anna' reflects the role of the widow Anna who in the Gospel of Luke, together with Simeon, recognised the baby Jesus, showing that older people have much to offer. It is very fitting that the name 'Anna' means grace or gift and the names can be added to the title 'Chaplain' to show its place in the care for older people.

Most people are aware of the ageing population around them, which is only going to increase in the coming years. So, the need for support, assistance and care for older people (and their carers) is going to increase also. Support needs will range across all the issues that ageing can bring such as memory loss, infirmity, loneliness and isolation and Anna Chaplains work collaboratively across all areas of support, linking in to any existing local groups or projects for mutual help and support. Often the problem with ageing and dementia is not so much that individuals forget as that they are forgotten. Anna Chaplaincy here in our benefice can help ensure that that does not happen within Hever, Four Elms or Markbeece. Please feel free to get in touch with me for any further information on 07766 76314 or [janerosam@gmail.com](mailto:janerosam@gmail.com).

Alternatively join us for our monthly parish lunch, held on the second Thursday of each month at Hever Village Hall 12.30pm.

Jane Rosam

## News from Hever Parish Council

With darker evenings and cooler weather coming, now is a time that we start to really notice the condition of our roads and pathways. Whether a pothole has appeared, a problem with drainage, traffic signal faults, overgrown vegetation (including hedges and grass) that are causing obstruction to a highways sign or to a path or roadway, or a road has been closed without prior notification, should you notice a problem with anything related to highways then please report it to Kent County Council Highways. Did you know there is a very easy and quick way to do this? You can either contact them via the website to report the issue, here is the link: <https://www.kent.gov.uk/roads-and-travel/report-a-problem> or via their helpline: **03000 418181**. If you are able to take pictures using your phone to send in when you log a fault that is always really useful too. When reporting an issue you will be given an enquiry number which you can then use on the website to track progress of the issue.

Autumn is a good time too to consider pruning back hedges and any greenery that may overhang roads and pathways from your home.

Should you notice that a road is closed for roadworks and a diversion route is not signposted, or notification has not been given of the closure, then please report issues like this too.



Local sheep spotted

## Vacancy for Councillor

Are you interested in being a Parish Councillor? Hever Parish Council has a vacancy for a Co-Opted Councillor to represent the interests of those living or working in the Parish. An architectural/ planning or a surveying background would be favoured, but applications are welcomed from all. If you'd like to know more, please contact me via [clerk@hever.org](mailto:clerk@hever.org)

Finally, the last Hever Parish Council Meeting of the year will be held on Thursday 10th November in Markbeech Village Hall with Planning at 7.00 pm and the full council meeting at 7.30 pm. Everyone is welcome to attend.

**Mrs Rachael Turner**

Clerk and RFO

077849 12645 [clerk@hever.org](mailto:clerk@hever.org)

**Accommodation**

Edenbridge Manor Care Home, residential, dementia and respite care 01732 492282

**Building & Design Services**

Albourne roofing	slating, tiling, flat roofing, repairs	01732 700 353
Causeway Joinery	bespoke joinery for the public and trade	01342 850170
Clare Elizabeth	painting and decorating	0777 5328781
G Moss	joiner & builder	07778 440 644
Jem Pickard	painting and decorating	07850 371558 or 01732 863062
M & M Walker	painting & decorating, plumbing, heating	07774 218 684
Richard A Maslen	Fine furniture and bespoke joinery	07930 341 415
W Smithers & Sons	listed building, conversions, extensions,	01342 850 559

**Catering**

Gorard Dean Catering - all events undertaken call Melanie Dean 07710 005 635

**Cleaning**

Housecleans	cleaning, ironing	01959 532 223
Rockport Cleaning	dry carpet & upholstery cleaners	01732 387 046

**Commercial Property**

Hever Business Centre Office Suites - Karrison Property 01959 563800

**Dog grooming and walking**

Wash n blow, dogs to go – dog grooming - Chris: 01892 740170/07736 484184

**Education**

Markbeech Nursery	for children 2-5 years	01342 850403
Chiddingstone Nursery		
School	for children 2-5 years	01892 871315

**Equestrian**

Four Elms Farm Livery 07771 634995

**Fitness**

Hever Castle Golf Club	golf course	01732 701017
Chiddingstones' Tennis Club		0776 964 2590
Falconhurst Cricket Club	cricket and training sessions	07771 892762
Pilates by Lorna at Four Elms and Ide Hill village halls		07747 628993
Smart Nutrition and Fitness personal training for midlife women and beyond		0771 8588847

**Funeral Services**

Alex Jones funeral directors &amp; monumental masons 01732 860047

**Garage Services**

Stuart Rieman luxury passenger car servicing &amp; repairs 01883 715 037

## Gardening and landscaping

APF Trees,	tree surgery and garden maintenance	07786 884924
Hever Landscapes	for all your garden projects	01892 740133
French's Fencing	gates, automation, fencing supply & fitting	0779 5551436
R. Bennett	hedges, fencing, grass cutting	01732 862971
Thompson Tree Care Ltd,	tree surgery, tree felling, hedge cutting	07747345815

## Health

Emma Roper		
Chartered physiotherapist	home physio visit, pilates classes	07771 925346
Paul Marro	Cognitive Hypnotherapy <a href="http://www.htherapy.co.uk">www.htherapy.co.uk</a>	01732 808211
Step by Step	foot health practice	07786 038149

## Home services

Andy Sayers	electrical services maintenance and repairs	07836 256146
Daren Wood	Chimney sweep, pots and cowl fitted	01959 564263
Pegrum	fuels, boilers, plumbing, solar panels, water/oil tanks	01732 463256
Sure Kill	pest control services	01732 863206

## IT

My IT Wizard Ltd	Computer problem solving	07779 285839
MR Computing	computer repairs in your home, no call out charge	01732 590077

## Local Produce

Allman Butchers	meat & groceries	01732 863214 or 700288
Falconhurst Farm Shop and deli		01342 850172

## Travel, Taxis and bike hire

Country Hire and Go,	electric bike hire and local taxi service	07723054863
Relyon Cars	local taxi company	01732 863 800

## Venue Hire and Weddings

Falconhurst Weddings		01342 850526
Markbeech Village Hall		01342 850328



## Church in November

November is the season of Remembrance. In addition, we are experimenting with the timing of our Family Service at Four Elms on 6th November. Also Advent starts on 27th November when we have our Christingle

service. Please continue to watch out for any late changes with details of services below and also at <https://threespires.wordpress.com/2021/06/08/our-next-service/>

Date & time	Service details	Readings/ theme	Sunday
6th November 9am	Family service at St.Paul's Four Elms	Remembering	3rd before Advent
6th November 10am	Holy Communion St.Paul's Four Elms with baptism	Thessalonians 2:1-5, 13-17; Luke 20:27-38	3rd before Advent
6th November 6pm	Evensong at Peter's Hever	1 Kings 3:1-15; Romans 8:31-39	3rd before Advent
11th November 12 midday	Act of Remembrance at Holy Trinity Markbeeche	Matthew 5:43-48	Remembrance Day
13th November 10am	Remembrance & Holy Communion at St.Peter's Hever	Isaiah 57:15-19; 2 Thessalonians 3:6-13; Matthew 5:43-48	Remembrance Sunday
13th November 10.45am	Service of Remembrance at St.Paul's Four Elms	Matthew 5:43-48	Remembrance Sunday
13th November 3pm	Forest Church at St.Peter's Hever	Remembering theme with bulb planting for 900 years anniversary	Remembrance Sunday
20th November 10am	Eucharist Holy Trinity Markbeeche with baptism	Jeremiah 29:10-14; Psalm 46; Colossians 1:11-20; Luke 23:33-43	Christ the King
27th November 8.00am	Said communion St.Paul's Four Elms	Romans 13:8-14; Matthew 21:1-13	Advent Sunday
27th November 10.00am	Advent Family service at Holy Trinity Markbeeche	Christingle	Advent Sunday

Our weekly Zoom Bible study continues on Mondays and Zoom Evening prayer on Thursdays both at 6.00pm and our in person Bible study on Monday evenings at 8pm. If you are interested in joining please contact Simon or see our website or Facebook page.

Please contact any of us if you would like prayer or to talk to someone during this time or any other help.

### Rector

Rev'd.Simon Braid  
07802 809849 and  
[simonbraid@icloud.com](mailto:simonbraid@icloud.com)

### Wardens

Hever  
Mandy Yarnold  
01342 850028

### Four Elms

Christina Hodson  
01732 700247  
Richard Bennett  
01732 862971

### Markbeeche

Nicki Talbot  
01342 850526  
Marielou Linklater  
01342 850579

### Administrator

Ana Roxburgh  
[beneficeemail@gmail.com](mailto:beneficeemail@gmail.com)

## our rector's thoughts

November is the season of remembering; following on from All Souls at the end of October, we have *'remember, remember the fifth of November'* and then Remembrance Day. This year it's more poignant as we remember the passing of our Queen and the loss of the generation old enough to have fought in World War II. At Forest Church on 13th November we'll be remembering when we plant bulbs to celebrate the 900 years of Christian worship in Hever.

Remembering is at the heart of Christian worship in the Holy Communion when we gather to *'do this in remembrance of me'* as we re-enact the events of the Last Supper. Loss of memory, dementia and alzheimers are particularly distressing both for the sufferer and their loved ones. In extreme cases it seems like we have lost the person and it may even make us question what it means to be human. I am therefore very pleased that Jane Rosam has been licensed by the Bishop as an Anna Chaplain to work in our parishes alongside older people and especially those suffering the affects of ageing. Anna appears briefly in Luke's gospel as a prophet and older woman, who worshipped and prayed giving thanks for the presentation of the child Jesus in the temple.

Anna appears alongside Simeon, whose song, known as the *'Nunc dimittis'*, is repeated by us each week at Evening

Prayer. As people get older today, many have bucket lists of what they want to achieve before they die, as if they risk arriving at the end of their lives having not quite got their money's worth! Simeon had a bucket list too but with only one thing on it: to see the Messiah. Hence the song, which declares: *'For my eyes have seen your salvation'*

There's a danger we might arrive at the end of our lives having enjoyed some great holidays but never having looked at the big questions of life and of who Jesus is. One of the thieves on the cross says to Jesus: *'remember me when you come into your kingdom'* (Luke 23:42).

I'm always struck by military graves where the fallen are not known but have the inscription: *'A soldier known unto God'*. Psalm 139, which was read at the Queen's funeral, speaks of God knowing us even better than we know ourselves: *You know when I sit and when I rise; you perceive my thoughts from afar. You discern my going out and my lying down;...you are familiar with all my ways.* Maybe this might help us come to terms with those who we seem to lose to dementia; those of us whom Jesus will welcome with the words: *Today you will be with me in paradise.*

God bless you all

Simon

## From the register

### Wedding

8 October Markbeech

Hannah Cockram & Dom Browne

### Baptism

25 September Markbeech

Felix Calvocoressi

### Funerals

15 August Hever

Chris Prior-Willeard, age 66

29 September Four Elms

Jennifer Marjorie Braiden, age 83

## news from the pews

### News from Hever Pews

The totals are in and I am delighted to tell you that the cyclists who took part in the Ride and Stride raised £ 550.00 and St Peter's will receive £275.00 of this. Thank you to everyone who supported them with their generous sponsorship.

On November 10th the annual Hever Christmas Fair will take place at Hever Castle. The funds raised are split between the St Peter's church and Hever CEP school.

We are looking forward to welcoming the Songs of Praise film crew in late November. The current format of the show features pre-recorded songs from their archives and 3 or 4 stories on local communities. They will be filming some church activities and some of the historical artefacts at the Castle. We would like to be looking our very best at St Peter's so if you can spend an hour or 2 on Saturday 27th November from 10.30am to help dust and Hoover I would be very grateful of your help. This year we are planning to have a carol supper after the 9 lessons and carols on Friday 16th December at the Hever village hall. There will be a hot

main course followed by home-made mince pies and fruit. We will be looking for volunteers to make the mince pies. The next Parish lunch will be held on Thursday 10th November starting at 12.30. We normally have between 18 and 24 people and serve soup, fruit and a delicious home-made cake. Everyone in the Parish is very welcome but it would be helpful for catering, if you can, to let us know that you are coming or have any special dietary requirements.

**Mandy Yarnold**  
Churchwarden

### News from Four Elms pews

Had William Morris happened to have visited St Paul's church on Harvest Sunday, a hundred years after his Arts and Crafts movement, (of which St Paul's is a great example) I hope he would have been satisfied to see how the church was lovingly decorated with autumnal flowers and foliage from local gardens. Hops, grapes, dahlias and leaves along with apples and a sheaves of barley adorned the church. Added to this were the boxes of gifts from the congregation. During harvest week the Four Elms primary school filled our church for

## news from the pews

their lovely harvest festival. What a joy to hear them singing. Well done to everyone involved in the service. The very many harvest gift boxes from the Primary School and the congregation have been taken to the Edenbridge Food Bank and some gifts will be distributed in the village.

The annual Harvest supper in the village hall was a full house again and a very merry time. So good to see so many people from the village. And thank you to everyone for your help on the night. The raffle raised £200 for the Bishops Poverty & Hope charity.

From 6th November, in an effort to please all the people all the time, the Rector has planned to have family friendly services at 9am, here in St Paul's, before our Holy Communion service at 10am, on the first Sunday of the month. Refreshments will be available at both services. This is a new venture and I hope you will support us.

There will be a short service of Remembrance on Sunday 13th November at 10.45am. A two minute silence will be observed at 11am and a poppy wreath will be laid at the foot of the War memorial. We remember all whose lives are lost in conflict.

**Christina Hodson**  
Churchwarden

### News from Mark Beech pews

I am writing this in the midst of political chaos. I hope by the time you read this things will be calmer and we will be able to feel that our government once more has our interests at heart, at least to some extent.

Despite external forces life in Markbeech has been following its annual pattern and we have just celebrated Harvest with a lovely service in church and with a very successful Harvest Supper. I think harvest was the first festival my late husband, Andro and I celebrated in Markbeech, over 30 years ago, and apart from the first year of the pandemic there's been a Harvest Supper every year since. People have come and gone, and we have lost several dear familiar faces in they last few years, but the tide of village life still rolls on. Newcomers to Markbeech seem to be very busy working and looking after their children, but we hope that they will find time to join in with the events and keep on the traditions that have made this such a friendly place to live.

Our next big village event is the Markbeech Winter Fair on November 26th at the Barn at Falconhurst. Our first fair in this new format was last year on one of the coldest, windiest and wettest days of the year. Despite the weather it was a hugely enjoyable event and this year we have an even bigger and better fair planned - and the weather simply can't be as bad. Make sure to save the date and come to buy lots of Christmas gifts, cards and edible goodies. Children are extremely welcome with special activities for them including face painting and treasure jars.

The church is extra busy in the run up to Christmas with the choir practising hard - as ever do consult the Three Spires website for updates and last minute info on events and church services.

**Marielou Linklater**  
Churchwarden

After one of the hottest & driest Summers on record we have had some welcome rain the that has really pepped up gardens, the countryside & our nursery stocks. We really need a lot more rain this Winter to top up reservoirs & groundwater.

Global warming is very real and as growers and gardeners, we can all do our bit to help the environment. We have invested heavily in a bark topping machine. This gives our plants an inch thick mulch to decrease evaporation and conserve water.

Our switch to peat-free compost last year was a major decision for us. The water holding capacity of many peat-free products is appalling! Most peat-free compost is compiled of Coir fibre (Coconut husk) which has no water holding properties – it's like planting into horse-hair! We are using a brilliant compost that is made up of bark fibre, a by-product of the forestry industry. Nurseries who use coir-based compost have to water 3-4 times a day, whereas we only water once when needed! As from 2024 peat will be banned from garden centres – we strongly recommend you buy products that contain bark fibre to protect the resource that's called water!

November is a great month for planting, especially larger items like shrubs, hedging & trees. The ground is still warm and there is moisture in the soil. Plants will focus their energy into root production during the Winter months, leading to bigger, better plants in the Spring. There can be some great bargains to be had, especially with rootball and bare root plants. They are field grown in huge

numbers to keep scales of economy down – trees especially you can source a decent specimen at a fraction of the cost of a potted tree.

Autumn is my favourite season in the calendar, especially for Autumn colour. Here are some top tips for November planting!

*Euonymus alatus* or *alatus Compactus* – amazing scarlet and crimson Autumn colour.

*Liquidamber 'Worplesdon'* – (Sweet Gum) – smaller cultivar with great Autumn colour.

*Amsonia Blue Ice* – herbaceous perennial with fab golden foliage in Autumn.

*Callicarpa 'Profusion'* – Shrub with the most amazing purple berries, almost metallic in appearance!

*Amelanchier lamarckii* – lovely small tree, especially as a multistem. Great Autumn colour and Spring blossom.

*Cotinus 'Dusky Maiden'* – The Smoke Bush has all year round interest, especially Autumn colour.

*Nandina 'Obsessed'* – Evergreen shrub with increasing foliage colour with decreasing temperatures.

We are looking to have our annual Christmas 'Pop-up' shop in **December** – lots of Christmassy goodies for those green-fingered friends/family! Check our website for details soon.

Happy Gardening!

**Simon Sutcliffe**  
**How Green Nursery**  
01732 700382  
[www.howgreennursery.co.uk](http://www.howgreennursery.co.uk)

## Benefice monthly rainfall in millimeters

		Jan	Feb	Mar	Apr	May	Jun	Jul	Aug	Sep	Oct	Nov	Dec
Four Elms	2020	66	106	55	38	6	45	21	42	35	142	59	88
	2021	134	46	30	6	58	79	45	54	41	121	21	78
	2022	22	55	27	7	58	12	7	36	79			
Hever	2020	77	125	48	38	13.5	45	25	41.5	41	160.5	55	97
	2021	127	42	41.5	5	65.5	84	61	73	41	139	14.5	87.5
	2022	16.5	44	22.5	2	62	19	15	39	86			
Markbeech	2020	96.25	140	47.5	40	10	49.25	31.6	36	54.6	163.75	40.5	95.6
	2021	120	40	51	4	55.5	38.5	48	0	39	141	11.5	86
	2022	21	80	23	12	55.5	21	3	0	82			

## Hall Bookings

Four Elms:

Village Hall

– Kevin Haydon 07787 394 806

Parish Rooms

– John Southworth 01732 700670

Hever

– Mrs Ryan 01732 864168

Markbeech

– Mrs Paige 01342 850328

## Councils

Kent County Councillor

Margot McArthur 03000 414817

Margot.McArthur@kent.gov.uk

Sevenoaks District:

Matthew Dickins 07910 328110

Hever Parish:

Rachael Turner

07784 912645

clerk@hever.org

## The Link Team

Bridget Harris, Joanna Wade, Paul Houlton

email: thelink@hever.org

Telephone 01732 700986 (Bridget) Mobile 07958 919 631 (Joanna)

Address 1 Triangle Cottage, Hever Road, Hever TN8 7NL

Benefice website [threespires.wordpress.com](https://threespires.wordpress.com) Community website [www.hever.org](http://www.hever.org)

The views expressed in the articles in this magazine are those of the authors and do not necessarily represent those of the editorial team. There is no implied approval or recommendation for any service or event advertised in the magazine.

Copy for the December edition should reach us no later than 15th December

Subscriptions cost £5 pa if delivered by a volunteer. For payment there are two options:

a) Send a cheque payable to 'The Link' with your address to

1 Triangle Cottage, Hever Road, Hever TN8 7NL or

b) Make a bank transfer or set up a standing order payment to 'The Link' at Lloyds a/c 01057697

sort 30-92-92 with postcode and surname as reference.

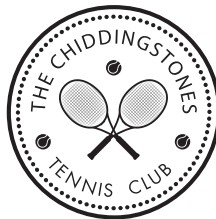
A copy of The Link can be viewed in The Link section of the community website [www.hever.org](http://www.hever.org)



Open everyday, this cosy, caring  
Nursery School for children ages 2-5yrs  
is situated in the beautiful grounds of  
Chiddingstone Castle with outstanding staff,  
woodland adventures year-round and excellent  
support for school transition.

Virtual tours available, please contact us for  
more information:

**01892 871 315**  
**chiddnursery@btconnect.com**  
**www.chiddingstonenursery.co.uk**



A fun, friendly tennis club with two  
fantastic all weather courts located  
on the beautiful Chiddingstone  
Sports ground.

New members always welcome.  
For all enquiries contact Adam:  
**tyrrelladam1@gmail.com**  
**0776 964 2590**



EDENBRIDGE MANOR CARE HOME

## Live Safe & Well

Edenbridge Manor offers the best in  
residential, respite, and dementia care.

- Nutritionally balanced seasonal menus
- A welcoming community of friends
  - Daily activities and trips out
- Safe visits for family and friends

Call **01732 492464**

to book a tour

**averyhealthcare.co.uk**

Edenbridge Manor Care Home | Mont St Aignan Way | Edenbridge | TN8 5FA

# Computer problem?

- For home or business.
- Problem solving for Windows, email, viruses, internet connection, broadband and other computer related issues.
- Data and registry recovery. Backup solutions. Remote support.
- Simple and professional advice given on all aspects of personal computing, including purchasing, upgrading and maintenance.
- Computer lessons (Windows, Internet, Microsoft Office...).
- Networking: secure wireless, dLAN, LAN, WAN, Active Directory.
- Bespoke database and software development.

**Microsoft®**  
**CERTIFIED**  
*Professional*

**Scott Harris**  
BSc Computer Science  
Hons, MCP, MCAD.

**Microsoft®**  
**CERTIFIED**  
*Application Developer*

Mobile: 07779 285839  
Email: [scott@MyITWizard.co.uk](mailto:scott@MyITWizard.co.uk)

## M & M WALKER

**PAINTING & DECORATING**  
**PROPERTY MAINTENANCE SERVICES**  
**CEILING & ROOFING CONTRACTORS**  
**ARTEXING & PLASTERING**  
**PLUMBING • HEATING**  
**CARPENTRY & JOINERY**

Tel: 01732 863 155  
Mobs: 077 742 186 84 • 079 004 207 15



**QUALIFIED . EXPERIENCED . INSURED  
PROFESSIONAL TREE SURGERY SERVICES**

<b>TREE REMOVAL</b>	<b>WOODLAND MANAGEMENT</b>
<b>CROWN REDUCTION/ THINNING</b>	<b>STUMP GRINDING</b>
<b>PRUNING</b>	<b>SITE CLEARANCE</b>
<b>TOPPING</b>	<b>HEDGE CUTTING</b>
	<b>LOGS</b>

**CONTACT ARCHIE FOR A FREE QUOTE**

**07786 884 924**

**APFTREES@GMAIL.COM**

**Emma Roper** BSc PgDip MCSP HPC  
**Chartered Physiotherapist**



Home physio visits for any  
musculoskeletal problem.

**Pilates Classes and 1-2-1**

physioemma@btinternet.com

07771 925346

www.homephysioandpilates.com

**ANDY SAYERS**

**ELECTRICAL SERVICES**

**DOMESTIC AND COMMERCIAL**

**Electricity in safe hands**

- Installations, rewires, board upgrades
- Fault finding, maintenance, repairs
- Inspection and testing reports
- Portable appliance testing (PAT)
- Qualified to BS 7671 2018 18th Edition
- Building regulations part P compliant
- Prompt, reliable and competitive rates

**T. 07836 256 146 E. andycsayers@gmail.com**

**www.andysayerselectrical.com**



Clare Elizabeth



Painting and  
Decorating  
Services

Reliable  
Local  
Friendly

**0777 532 8781**

clareelizabeth100@gmail.com



**W. SMITHERS & SONS**

EST. 1955

OLD MILL YARD, HIGH STREET, COWDEN, KENT, TN8 7JJ

TEL 01342 850559 FAX 01342 850981

EMAIL COLIN@WSMITHERS.CO.UK

WWW.WSMITHERSANDSONS.CO.UK



Conversions, extensions, listed buildings, joinery, plumbing and heating,  
kitchens and bathrooms, electrical, roofing,  
maintenance and repairs and decorating.  
Covering all types of building work.



**ALBOURNE ROOFING**

• Domestic • Commercial • Industrial

**Roofing Contractors**

**Slating / Tiling / Flat Roofing**

**All Maintenance & Repairs  
& Property Renovations**

For Free Estimates & Advice from  
City and Guilds Qualified Tradesmen

**T: 01732 700 353**

**M: 07767 893 772**

# painting & decorating by **jem pickard**

interior & exterior  
free estimates & consultations  
competitive prices  
highest quality guaranteed  
expert & friendly service  
fully insured

jempickard@btinternet.com  
www.jempickardpainting  
decorating.co.uk  
www.facebook.com/  
jempickardpaintingdecorating



**07850 371558  
01732 863062**

Established  
Since 1981



## JOINERS & BUILDERS LTD

**LOFT CONVERSIONS, EXTENSIONS  
TIMBER FRAME BUILDINGS & BESPOKE JOINERY**

**Telephone: 07778 440644  
Email: g.m055@icloud.com  
www.gmjoinery.com**

### HOUSECLEANS

Weekly, monthly or just when you need a bit of extra help,  
We will clean your house to the highest standard, do your ironing  
and make up your beds.  
Only the best quality products used – Eco friendly products available.

Moving house?  
We can clean before you move in or after you move out.

**For more details call**

**01959 532 223**

**07706 868 772**

**debbiehousecleans@gmail.com**

**ENJOY LIFE – LEAVE THE CLEANING TO US!**

(And we're happy to walk the dog and feed the cat too)

### Step by Step Foot Health Practice



**Member of British Association of Foot Health Professionals**

**Step by Step provides a highly professional foot care service,  
which is fully mobile, attending to all your foot care needs  
within the comfort of your own home.**

**For an appointment or more information telephone:  
07786 038149 – Michelle Hogan MCFHP**

# THE WATERSIDE

BAR | RESTAURANT | TERRACE

AT HEVER CASTLE GOLF & WELLBEING



FOR GOLFERS AND NON GOLFERS

## Enjoy Breakfast, Lunch and Drinks

To find out more email:  
[waterside@hevercastlegolfclub.co.uk](mailto:waterside@hevercastlegolfclub.co.uk)

[hevercastle.co.uk/waterside](https://www.hevercastle.co.uk/waterside)

AN EXPERIENCE TO REMEMBER

## Four Elms Farm Livery

- 60x20m floodlit outdoor arena  
– 36x45m indoor arena
- Solarium/hot/cold washdown
- Car and lorry parking
- 12'x12' monarch boxes/rubber matting  
automatic drinkers
- Club room with oven/microwave/dishwasher
- Rug washing on site
- Post and rail fencing
- Staff living on site – exercise – qualified  
trainer
- Off road hacking 100 private acres
- Dressage training with international riders  
and judges
- Jumping and polework clinics
- Unaffiliated dressage competitions

### Four Elms Farm Livery

Pootings Road

Four Elms

Kent TN8 6PH

Mobile 07771 634995 or 07730 038747

## Country Hire and Go

PRIVATE HIRE TAXI  
ELECTRIC BIKE HIRE & SALES

07723 054863

AIRPORTS | EVENTS | SCHOOL | SHOPPING  
APPOINTMENTS | NIGHTS OUT

### Female Drivers

Luxury 4 Passenger Vehicles, Pet Friendly  
24/7 Service, no late night charges  
Local and long distance  
All day excursions

E-BIKES DELIVERED & COLLECTED TO  
YOUR LOCATION

UK Designed and Built  
Pedal Assist, Motorised Speeds up to 15.5 mph  
Up to 60 miles on one Charge  
Half | full | 2 or 3 Day Hire  
Safety and Security Equipment and Maps  
Route planning  
Gift Vouchers for Experience Days  
E-Bike sales



countryhireandgo@outlook.com  
www.countryhireandgo.com



# FALCONHURST

F A R M S H O P

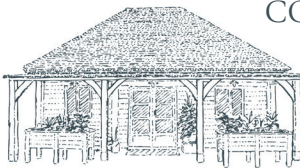


OPENING TIMES

MON - FRI 10 - 5

SAT 10 - 3

SUN CLOSED



COWDEN POUND ROAD

MARKBEECH

TN8 5NR

01342 850 172



**THOMPSON**  
Tree Care Ltd

**Felling - Reductions - Thinning - Stump Grinding  
Hedge Cutting - Seasoned Logs**

Telephone: 07747 345 815

Email: [thompsontreecareltd@gmail.com](mailto:thompsontreecareltd@gmail.com)



**the nature of learning**

Based at High Buckhurst Cottage, Mark Beech, we run it as a woodland school, offering outdoor fun and learning and giving the children the freedom and space to be themselves, to run explore, swing, discover, climb, to be creative in a safe and beautiful setting.

Our delightful shepherds hut is on site and has all necessary facilities as well as a warming wood burning stove.



Monday to Friday 9-12.15pm.  
Lunch club available until 1.30pm

For further details contact:  
Manager: Ms Fiona Baxter 07722497657  
email [markbeech\\_nursery@hotmail.co.uk](mailto:markbeech_nursery@hotmail.co.uk)  
Owner: Mrs Ann Roberts Cleeve  
01342 850403

**WASH n' BLOW  
DOGS 2 GO**



◆ **Fully Insured** ◆ **Free Consultations** ◆ **City and Guilds Qualified**

☺<Dematting ☺<Grooming ☺<Bathing ☺<Styling

☺<Nail Clipping ☺<Ear and Eye Cleaning ☺<Teeth cleaning using latest ultra sound technique

☺<Fully qualified Reiki K9 practitioner which I incorporate into grooms for nervous or anxious clients

Competitive pricing dependent on size, breed and coat type.

*All breeds and temperament considered.*

Call Chris: 01892 740170/07736 484184

[Setters4me1@gmail.com](mailto:Setters4me1@gmail.com)

Find me on Facebook <https://www.facebook.com/setters4me/#>



## *T. Allman Butchers Limited*

**High Class Family Butcher**

**49 High Street, Edenbridge  
Tel: 01732 863214**

***Home-killed meat  
Free local delivery***

***YOUR LOCAL BUTCHER***



**01732 863800**



**PRIVATE HIRE ● COURIER SERVICE**  
**AIRPORTS**  
**WEDDINGS ● ACCOUNT WORK**  
**MINIBUSES ● LUXURY VEHICLES**  
**4-8 SEATERS AVAILABLE ● SCHOOL RUNS**

**AVAILABLE 24 HOURS A DAY,  
7 DAYS A WEEK ON PRE-BOOKINGS**

The Kiosk,  
Station Approach,  
Edenbridge  
TN8 5LP

**DRIVERS  
WANTED**

**DRIVERS  
WANTED**

**[www.relyoncars.co.uk](http://www.relyoncars.co.uk)**



# MR Computing

38 years of experience in IT

## NO FIX NO FEE & NO CALL OUT CHARGE

- The computer repair shop that comes to you at an agreed time/day, no waiting around and no need to transport your IT equipment.
- Local mobile (Apple/Windows) computer support for Business & Home.
- Reliable wireless range improvement for Home & Business.
- 98% of work carried out in a one hour visit and fixed price workshop repairs.
- Repairs speedup and maintenance, Data transfer/recovery, Computer malware/virus removal.
- New computers set up and made to feel familiar.
- Tablet & Smartphone setup and repairs.



&



**Call Mark  
& Sue on:**

**0800 6129534**

or

**01732 590077**

**Email:**

**office@mrcomputing.net**



Website - [www.mrcomputing.net](http://www.mrcomputing.net)

Reviews - [fb.com/mrcomputingltd/reviews](https://www.facebook.com/mrcomputingltd/reviews)

## Markbeech Village Hall

Perfect for weddings and garden parties

● Large and secure garden



● Fully functioning kitchen



● Reasonable rates

● A beautiful rural setting



● Capacity to seat up to 110 guests

To book please contact Mrs Paige at  
[mbvh1924@gmail.com](mailto:mbvh1924@gmail.com) or on 01342 850328  
[www.markbeechvillagehall.org.uk](http://www.markbeechvillagehall.org.uk)

● Great transport links



**GAS, LPG, OIL & SOLID FUEL**

**SALES • SERVICING • PLUMBING**

**RANGE COOKERS • BOILERS • WOOD STOVES**

**AGA REFURBISHMENT • UNDERFLOOR HEATING**

**WATER TANKS • OIL TANKS**

**01732 463256**

**office@pegum.net**

**Unit 12, Gaza Trading Estate, Hildenborough, Kent TN11 8PL**



**FALCONHURST**

GARDENS & EVENTS

## Weddings at Falconhurst

### *2022 bookings available*

We have a limited number of bookings available, so don't delay in getting in touch if you're considering Falconhurst for your wedding.

### *Garden Weddings*

Use the gardens as the backdrop for your bespoke marquee wedding. The Garden is perfect for larger weddings; the marquee lawn can host up to 200 guests.

### *The Barn*

The Barn provides a different feel to that of the gardens; it is an intimate space with a rustic character. The Barn can host up to 80 guests, who are welcome to enjoy the adjacent wild barn gardens, and reception drinks in the walled garden.



Falconhurst  
Gardens & Events,  
Markbeech,  
Kent TN8 5NR  
01342 850 526

@falconhurstestate

www.falconhurst.co.uk



## FALCONHURST CRICKET CLUB, MARKBEECH

[www.falconhurstcc.co.uk](http://www.falconhurstcc.co.uk)



The Club was founded in 1854 and cricket has been played here ever since. If you are looking for a friendly cricket club to play for – all ages and abilities welcomed – please contact Club Secretary Tom Churton:

07434 841 421 or [churtont@gmail.com](mailto:churtont@gmail.com)

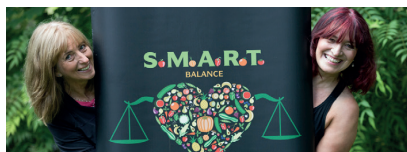


## French's Fencing

- Free no obligation quote
- Gates and gate automation
- Fencing supplied and fitted

Contact us on  
**07795551436**

[www.frenchsfencing.com](http://www.frenchsfencing.com)



## Smart nutrition and fitness

- Personal training for midlife ladies and beyond
- Menopause advice
- Nutrition advice
- Relaxation and stretch
- One to one sessions online or in person (when permitted)

Fiona 0771 858847

[www.smartnutritionandfitness.uk](http://www.smartnutritionandfitness.uk)

## HEVER LANDSCAPES LTD

We offer year-round garden management, regular maintenance or a one-off garden tidy/clearance. Grass cutting, lawn care, hedge-cutting, leaf clearing and jet-washing patios. Construction of vegetable patches, chicken runs, compost bins. Commercial contracts.

We also offer complete landscaping projects, such as patios, retaining walls, all types of fencing, planting schemes, re-seeding and turfing, water features, wooden garden structures, tree surgery, hedge laying and woodland clearance.

PLEASE PHONE KARL ON

**01892 740133 or 07909 916909**

[WWW.HEVERLANDSCAPES.CO.UK](http://WWW.HEVERLANDSCAPES.CO.UK)

Est. 1997



## **R. BENNETT**

HEDGE LAYING  
FENCING  
MOBILE SAW BENCH  
HEDGE TRIMMING  
GRASS CUTTING  
ROTAVATING

CONSERVATION WORK  
UNDERTAKEN



EDENBRIDGE 862971

**RATS! MICE! COCKROACHES!  
MOLES! SQUIRRELS!**

### **SURE KILL**

PEST CONTROL  
SERVICE  
Member of NPTA



Marlpit Hill, Edenbridge, TN8 6JG

Tel: 01732 863206

Mobile: 07831 300947

**WASPS! FLEAS! MOTHS! ANTS!**

## CHIMNEY SWEEP

Clean and efficient,  
friendly service - pots  
and cowls fitted

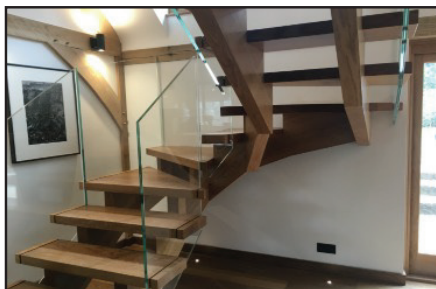
Telephone: 01959 564263

Mobile: 07885 059023



member of  
**IACS**

Independent Affiliation  
of Chimney Sweeps



## CAUSEWAY



## JOINERY

Tel: 01342 850170

Manufacturers of bespoke joinery to the trade & public

[www.causewayjoinery.co.uk](http://www.causewayjoinery.co.uk)

E-mail: [causewayjoinery@aol.com](mailto:causewayjoinery@aol.com)



# THE HEVER BUSINESS CENTRE



- All inclusive monthly rent
- Fast broadband availability
- Plenty of private parking
- Suites for 1 – 6 persons
- Security alarm
- London Bridge (direct) 42mins
- Flexible tenancies
- Conference/meeting room
- No VAT

## A SELECTION OF INDIVIDUAL OFFICE SUITES

Available to rent on simple flexible tenancy agreements.

Approached by an attractive private drive, the Hever Business Centre is a distinctive and handsome detached building providing office suites with plenty of private parking.

Formerly Hever Station, the centre now offers bright workspaces with architectural features typical of the Victorian railway era.

## TO FIND OUT MORE:

Please contact

**David Robinson**

**01959 563800**

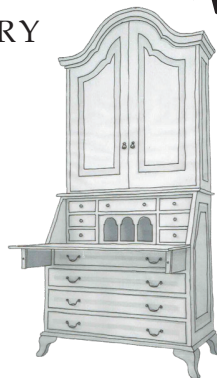
**hever@karrison.co.uk**



**KARRISON**  
PROPERTY

## RICHARD A MASLEN

FINE FURNITURE &  
BESPOKE JOINERY



01342 851160 / 07930341415  
richardamaslen@btinternet.com  
www.richardamaslen.co.uk

# ALEX JONES

## FUNERAL DIRECTORS

HOME VISITS  
AVAILABLE

MONUMENTAL  
MASONRY

BEAUTIFUL PRIVATE  
CHAPELS OF REST

PRE-PAID  
FUNERAL PLANS

*Lingfield*

01342 832534

1 EAST GRINSTEAD ROAD,  
LINGFIELD, RH7 6EP

*Oxted*

01883 730383

92 STATION ROAD EAST,  
OXTED, RH8 0QA

*Edenbridge*

01732 860047

70 HIGH STREET,  
EDENBRIDGE, TN8 5AS

*Forest Row*

01342 822399

1 ASHDOWN COURT,  
FOREST ROW, RH18 5EZ

A TOTALLY INDEPENDENT FAMILY CONCERN

[www.alexjonesfuneraldirectors.co.uk](http://www.alexjonesfuneraldirectors.co.uk)

Golden Charter   
Funeral Plans



# Dry Carpet Cleaning

**Say NO to wet carpets**

- ✓ **Spills & Spots - GONE**
- ✓ **Smells & Odours - REMOVED**
- ✓ **Upto 85% of dust & allergens - REMOVED**
- ✓ **Child and pet safe**



Get Main Room Cleaned  
save **50%**  
on all further rooms



**Local family run business**

**Call Chris to arrange a free quotation**

**01732 387046 or  
07827 580012**

**[www.rockportcleaning.co.uk](http://www.rockportcleaning.co.uk) | [info@rockportcleaning.co.uk](mailto:info@rockportcleaning.co.uk)**



## November Diary

- 29 Oct **Edenbridge Music & Arts Trust Concert**, Holy Trinity Church, Crockham Hill 3pm
- 10 Nov **Hever Christmas Fair**, Guthrie Pavilion, Hever Castle
- 10 Nov **Hever Parish lunch**, Hever Village Hall 12.30pm
- 10 Nov **Hever Parish Council meeting**, Markbeech Village Hall 7.30pm
- 13 Nov **Remembrance service** in Cowden and other venues from 10.45  
then **RBL lunch** at Cowden Village Hall 1pm
- 18 Nov **Hever Film Club 'King Richard'**, Hever Golf Club supper 6.30pm film 7.30pm
- 19 Nov **WI Christmas Fayre**, Causeway Hall Chiddingstone 12-3pm
- 20 Nov **Cowden Hall Xmas Fair** (call Sue 07929337556 for info) 12-3pm
- 26 Nov **Markbeech Winter Fair**, The Barn, Falconhurst
- 3 Dec **Concert of words and music "Out of the Darkness"**, St Peter's Hever
- 10 Dec **Carols in Hever**, 4.30 at the Henry, 5.30 in the church
- 11 Dec **Carols at the Kentish Horse**, Markbeech 5.30pm
- 16 Dec **Carol Supper** (after carol service at St Peter's) Hever Village Hall
- 18 Dec **Christmas Carols** at St Paul's Four Elms 3pm
- 13 Jan **Hever Film Club – 12 Angry Men**, Hever Golf Club 7.30pm
- 10 Feb **Hever Film Club – Foul Play**, Hever Golf Club 7.30pm
- 10 Mar **Hever Film Club – The Duke**, Hever Golf Club 7.30pm