

June 2023

In this issue:

- It's a dog's life
 - Desert Island Whisks
 - Through a glass brightly
 - Little house of goodwill
 - Framing the coronation
 - Back to the garden ..
- ...and much more!



THE JUNK

Parish magazine of Four Elms, Hever and Markbeech
£1



MR Computing

38 years of experience in IT

NO FIX NO FEE & NO CALL OUT CHARGE

- The computer repair shop that comes to you at an agreed time/day, no waiting around and no need to transport your IT equipment.
- Local mobile (Apple/Windows) computer support for Business & Home.
- Reliable wireless range improvement for Home & Business.
- 98% of work carried out in a one hour visit and fixed price workshop repairs.
- Repairs speedup and maintenance, Data transfer/recovery, Computer malware/virus removal.
- New computers set up and made to feel familiar.
- Tablet & Smartphone setup and repairs.



&



**Call Mark
& Sue on:**

**0800 6129534
or
01732 590077**

Email:

office@mrcomputing.net



Website - www.mrcomputing.net

Reviews - fb.com/mrcomputingltd/reviews

Markbeech Village Hall

Perfect for weddings and garden parties

● Large and secure garden



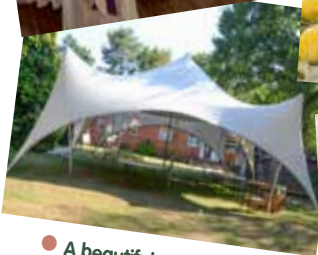
● Fully functioning kitchen



● Reasonable rates



● A beautiful rural setting



● Capacity to seat up to 110 guests

To book please contact Mrs Paige at
mbvh1924@gmail.com or on 01342 850328
www.markbeechvillagehall.org.uk

● Great transport links

Welcome to the June Link

June is bustin' out all over - at last. After a slow spring, the grass is vibrant and the bluebells have been spectacular. Ladies' smock, delicate and hard to photograph, has been everywhere and June's full moon on 3rd will be a strawberry one. In the art world those who failed to get tickets for the fabulous Vermeer exhibition in Amsterdam enjoyed him in East Grinstead instead - in the cinema! He painted "scenes that make the

clock stop ticking". follow the ubiquitous advice and "Download the App" of Apcoa direct" or pay via the website apcoaconnect.com. There is a phone number (01895 262122) but it expects you to be able to receive texts on your phone (which you can usually do even on a landline). The good news is that you can book the space before you arrive in the car park and also after you have hopped on the train.

The last month saw a successful coronation party at the Castle - grateful thanks to the Hever Residents Association, Hever Parish Council, the Festival Theatre and the Castle. It also saw some confusion in the car park at Hever station. Penalties have been levied against drivers dropping off passengers well within the free 30 minutes - do appeal if you have been sent a penalty notice.

The car park, number 2783, is "cashless" which means paying by electronic means... the QR code for Apcoa (the company running it) features large on the signs at the station. It is an alchemy of a square which, if you hover the camera of a smartphone over it, will reveal the Apcoa website enabling you to pay. Alternatively you can

But all in all it requires courage to embrace the electronic age. Good luck, grasp with confidence as with a nettle! If in a panic ring the editors and we will talk you through it!

Joanna Wade



pet of the month

Teddy is a 4 year old Staffordshire Bull Terrier who came to live in Hever in November 2022.

He had been found straying and was turned over to the dog warden so had to serve his statutory time in the dog pound for 7 days. Nobody came forward for him, he was unwanted and homeless, which made for a very unhappy Teddy.

Despite his unknown beginnings, he chose to pick himself up and put his best paw forward and integrate himself into village life with much enthusiasm.

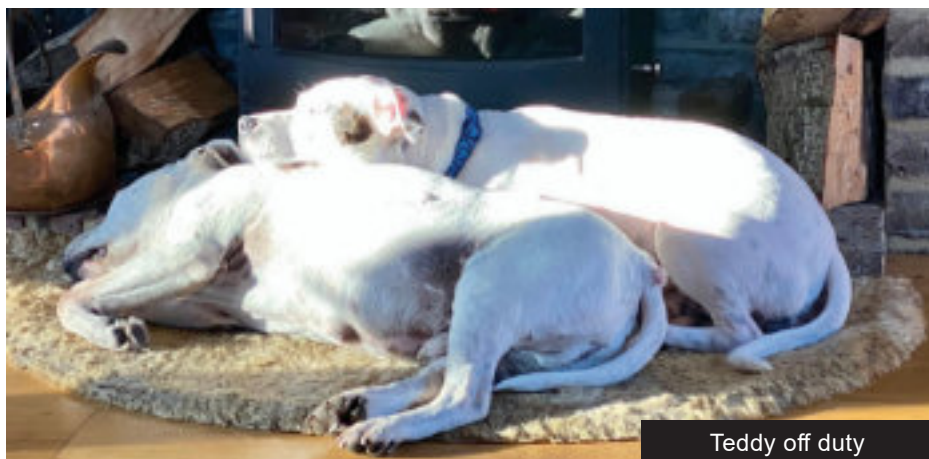
Teddy now lives happily alongside an elderly gentleman staffie and two greyhounds. Being a young lad he still has a lot to learn and is currently working hard on his manners and social skills. His work and enthusiasm to learn is paying off, so much so that he has now taken on the responsibility of delivering the monthly Link magazine. The responsibility of



Link delivery agent

having a job gives him a sense of achievement and he seems delighted with his monthly pay packet of gravy bones.

Janet Lindsay



Teddy off duty

desert island whisks

The Norwegian cheese slicer or 'Ostehøvel' (pronounced 'Urst-er-val') is one of my favourite kitchen implements and is also the first one I was given as a student. It was invented in 1927 and the design is based on the carpenter's plane. Most Scandinavians have several in their kitchen drawer. As my mother was Norwegian, we all learnt to use one from an early age to cut any cheese but especially 'Gjetost' a brown, sweet tasting Norwegian cheese that is an acquired taste!

Today my cheese slicer has other uses - shaving off slices of fridge-hard butter in an attempt to soften it speedily or cutting thin slices of cucumber for summer salads. It cuts slices of cheese beautifully (and economically!) for sandwiches.

We have several different designs of cheese slicers. Some have wooden handles and others are made entirely of steel.

We even have a reindeer head design that the children particularly like! We refer to it as our 'Gjetost slicer' and my five older grandchildren pictured here are now using or learning how to use it ready to teach their new born brothers and sisters to use this most versatile and well used implement.

Susie Braid





MEET THE VILLAGE!

Saturday 3 June between 10.30am and 1pm

Hever Village Hall

If you're interested in learning more about our village community then come to "Meet the village".

Various village organisations, clubs, groups and small businesses will be showcasing what they do. Come and meet their members and who knows - you may even be interested enough to get involved!

We will be serving tea, coffee and cakes at the drop in event.

The Hever Village Hall committee will also be displaying a model showing what the new hall will look like and asking you how you would like to use it.

If you would like a table to exhibit, please contact Lisa Cowell on 07917 307 452.

Do come and join us to help build, support and grow our local community.

Four Elms Village Fete
Saturday 8th July 2023
1pm

Children's Coronation Crown Competition 2pm

Fly past Dog show

Fun & games

Tea tent Beer tent

Church Meadows, Four Elms

what I do

My stained glass hobby started when I was 24. My friend, a local stained glass artist, had made glass panels for every door in her Victorian house, and Tiffany style lamps lit every room. I loved the way that the glass panels made the house glow from front to back, and decided that I wanted to learn how to make those panels too! I soon enrolled on a beginners course at Battersea college, and in six sessions I had made my first, slightly wonky, leaded panel. I was hooked!

Our kitchen table became my makeshift workshop where I practised cutting glass, and I learned the copper foil technique, which is my favourite method as it's much quicker than using lead, and you can make more intricate designs. Copper foil is used to make smaller items such as suncatchers and Tiffany style lamps.

Stained glass can be an expensive hobby for a beginner, as you need different tools to make copper foil and lead panels. Glass can also be expensive, especially red and orange hues, which contain small amounts of gold. So, I never throw away glass unless it becomes too small to work with.

When I started I made simple panels, then more complex fairies and angels, often soldering in pieces of jewellery sourced from charity shops to make each piece unique. As my confidence grew I made a Tiffany style lamp and fan lamps. Due to a house move and lack of space my tools and glass went into storage for over ten years, but when we moved to Markbeech in 2021, my husband Mark built me a workshop in the garden. I fell in love with glass again, and due to our surroundings,

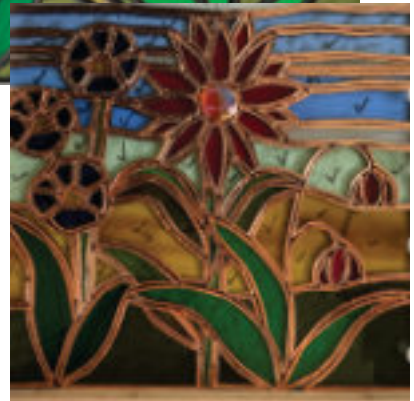
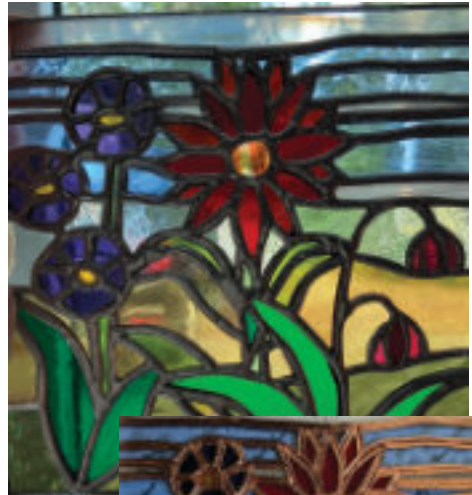
found that I was more inspired by nature. I first made the panel shown in the picture, and also enjoy making birds, dragonflies, butterflies and fish. I had a stall at the Markbeech Winter Fair, which I hope to attend again this year.

Copper Foil method

In this technique, the glass is laid over a drawn template, cut to size, rough edges are removed with grozing pliers or a glass grinder, then sticky copper foil tape is applied to the edge of each piece of glass. Liquid flux is then applied where the glass pieces meet, and solder is melted in a neat seam to bond the pieces together. A hanging hook is then applied.

Karen Thomas

Harewood Stained Glass, Markbeech
karenpope70@googlemail.com





The coronation party at the castle

Four hundred came,
it was quite a party,
The kids made crowns
- so very arty,
The church bells rang out
clear and strong,
The guns saluted
to the throng,
Picnics enjoyed and
sparkling wine,
The day was all together
fine -
"God save the King" they
sang together
Oblivious of the wobbly
weather.



Yellow Bikes And Bunting

– ‘Art In June’ Is Back!

From the 2nd till the 18th of June, local studios and venues will open their doors and welcome you to meet the artists and makers; catch up with the work they've been doing; and even maybe join in a workshop.

Just look out for the yellow bikes to guide you to a huge variety of creative products in many styles and forms.

In our area, you can make an easy tour of the local artistic venues: Jessops Farm and Chequers Cottages at Bough Beech; The Red House at Hever are all familiar names. The Barn at Falconhurst is in its third year at Markbeece. At Penshurst we have The



Old Diary, Anna Clark is in Cowden and Watstock Farm has opened up as a brand-new studio/venue near Wellers Town.

Visit artinjune.org for all details and a taste of the art on show from each artist.



**Colin Anderson, Rebecca Day, Elitta Fell,
Claire Longley, Anne McArdle,
Mary McCarten, Liz Stace
The Red House, Rectory Lane, Hever
01732 864874**

**Enamels, Ceramics, Illustration, Textiles,
Glass, Printmaking & Paintings**

Opening Times during June

Saturday 3rd, Sunday 4th, Wednesday 7th to Sunday 11th

Wednesday 14th to Sunday 18th 11am - 5pm

*To find out which days each artist is present,
please go to www.artinjune.org*



little house of goodwill

In 1868 Four Elms had two religious establishments – a Congregational Chapel built in 1831 and a corrugated iron structure which served the Anglican community.

People had longed for a 'proper' church building and when the new curate arrived in the late 1870's, a committee was set up to raise funds for a more traditional permanent building. The cost of building the church was £4,500, most of it raised by the goodwill of local people.

The 500 strong community pulled together with all kinds of fund-raising

the designer of Liberty's in London. He was a young man then and the parish church of St. Paul was an early commission which surely set the standard for what was to come. It was built in Early English style and consisted of chancel, nave, transepts, an apsidal baptistery and a bell turret with a spire. St. Paul's was one of the first churches to be built of reinforced concrete which was then faced with sandstone.

The interior was finished in the Arts and Crafts style in vogue at the time, led by the designer William Lethaby, a young man, who had rubbed shoulders with William Morris and

Phillip Webb. How fortunate that these two up and coming architects were to be responsible for the design of the new church. Lethaby designed a wonderful screen which divided the nave from the chancel and he also installed a reredos carved in Torquay Marble



schemes. Young and old, rich and poor, worked to achieve a common goal. The new curate, Rev. Alphonsus Klamborowski, was one of the driving forces, and he worked tirelessly with and for his parishioners, who responded magnificently.

Building began in 1881. The architect was Edwin Hall, later famous as

from his native Devon. The reredos represents the Adoration of the Magi, a very fine early example of his work. Stained glass windows and a later rose window were installed funded by various benefactors, adding to the already beautiful interior.

By the time building began, the curate, had become the incumbent. The Rev.

Klamborowski was appointed vicar in 1881. His Living, in the gift of the Archbishop of Canterbury, was £180. It does not seem a lot, but the average wage at the time was just £56, and an ordinary working man could expect to earn £46.

In 1881 Rev. Klamborowski had a wife but no children and he lived at Five Fields House on Five Fields Lane. He was a very interesting character and was beloved by his 'flock'. Born in London in 1835, the son of Polish immigrants, his father, a jeweller, brought up Adolphus and his three younger siblings in Cheltenham, Gloucestershire. Adolphus earned his living as a teacher but eventually

He led a successful campaign for fresh water to be brought to Four Elms as he believed this was essential to avoid frequent epidemics of waterborne disease, and Four Elms had a good water supply by the late 1890's. The reverend was also instrumental in the building of a National School opposite the church in 1895 on land donated by Mr. H. Williams of Boons. The building could cater for 80 children, taught by a Master and a Mistress. He helped to establish the Four Elms Benefit Society which paid out money to people if they were ill or out of work. This all added to the feeling of a caring society in Four Elms. He presided over flower shows and fetes becoming part of the fabric of the place.



In late 1903 he became ill and was unable to perform many of his duties. He died on August 18th, 1905.

His funeral, on Thursday August 24th was very well attended, and he was clearly well loved

chose a career in the church soon after he married in 1863, starting as a curate in Hinckley, Leicestershire and later a village in Dorset. By the time he became the vicar of Four Elms he was 45 years old.

and respected in the community. He was laid to rest in Edenbridge Parish Churchyard. His wife lived on at Five Fields house for almost 20 more years. She died in 1924 having continued to play a part in the life of the village.

Rev. Klamborowski was very active in the community and fought hard to improve the lives of his parishioners.

Stella Carroll

HOLY TRINITY PARISH CHURCH, FOREST ROW

MUSIC FOR A SUMMER EVENING

in aid of Holy Trinity
and St Dunstan's Churches

with

Holy Trinity Festival Choir
Lingfield College Prep Orchestra
Christopher Harris – Organ/Piano
Simon Morris – Director of Music

SATURDAY 17TH JUNE 2023 7.30pm

£7.00 Adults

£3.50 Children

Lucky Programme Prizes / Refreshments

Tickets: Simon Morris 01342 823940

EDENBRIDGE MUSIC AND ARTSTRUST PRESENTS



TOWARD THE DAWN:

a musical journey from evening to sunrise

Programme includes works by Tallis, Byrd and the Allegri Miserere mei

Saturday 17 June at 7pm Edenbridge Parish Church

Tickets £18 from Lennox Cato, 1 the Square, Edenbridge,
Alexander Crowe, Secretary, EMAT 07821 683 482, via website:
edenbridgemusicandartstrust.org.uk or on the door

new growth at Hever primary

We are fortunate that our school is in such a beautiful setting and even more fortunate to have a band of enthusiastic parent volunteers who help to ensure we get the very best from it! This includes supporting weekly Forest School and, more recently, redeveloping our kitchen garden. We are also very grateful for the generosity of local companies who have donated railway sleepers, compost and plants, to enable us to renovate our raised beds.



I write this at the start of Mental Health Awareness Week, which this year focuses on anxiety. We know that spending time in nature has a positive impact on our mental health and is, in fact, one of the steps recommended by the Mental Health Foundation to reduce anxiety. The idea of using gardening or horticulture, to improve wellbeing, mood and the general welfare of people is a well-established one. Taken in its simplest form, merely being outside, enjoying the greenery and the surroundings can be therapeutic. Added to this are a wide range of learning

opportunities linked to the curriculum, along with the chance to develop children's communication and socialisation and to improve strength and coordination. Giving children the responsibility of caring for seedlings, cuttings or even their own small plot, also gives them the opportunity



to learn how to care for other living things. This in turn can help them to be aware of their own needs and the needs of others.

With all the publicity surrounding the 'challenging' KS2 tests last week, it is important that schools offer a broad and balanced curriculum, recognising the benefits and wider opportunities that can be offered through activities like Forest School and gardening. It is also important that we teach children how to look after their mental health, along with their physical health, and at Hever Primary we are maximising our use of the great outdoors to positively contribute to both!

Helene Bligh
Headteacher

The King's Coronation

Four Elms certainly enjoyed the Coronation celebrations. Our wonderful PTA provided us with a tea party on the Friday before the Coronation, which the children enjoyed outside as a whole school. In the afternoon, the children sang the National Anthem and then showcased the crowns they had made at home in a parade. After that, our year 6 children led a carousel of activities for the school to enjoy which included: pin the crown on the King, royal skittles, limbo, stamp making and musical statues. It was a great community event and we were pleased that the sun stayed out!

Year 5 Residential

As part of our key stage two residential programme, the children in Year 5 went to Carrot Wood where they spent three days enjoying nature and completing a variety of challenges. The children showed incredible courage as they conquered the low ropes and the high ropes. They also enjoyed abseiling, pedal karting, swimming and den building. We look forward to continuing our residential programme with year 4 next term who will be having a sleepover at a soft play adventure centre and year 6 who will be visiting the Isle of Wight.

Jess Fermor
Head of School



I recently drove around the Parish to put the agenda for the forthcoming meeting up on the boards. The sun was shining and the birds were singing. The sunlight however, highlighted some of the parish assets are in need of a spring clean!

Over the summer the notice boards will be cleaned and restored, the play equipment will be safety checked and maintained where needed.

I am delighted to report the Four Elms pond repairs are now complete with the final piece being the meticulously painted fingerpost. The pond scene really does look quite splendid!

It has been a very busy few months. The Parish, Town and District Elections

are now over, with Hever Parish Council having an uncontested election. Our Parish Councillors have now completed the necessary paperwork to commence their term of office. The internal audit was carried out and the resulting AGAR (Annual Governance and Accountability Return) for 2022-2023 signed off by HPC. Whilst writing, we are shortly meeting with the Kent Highways Team for the long awaited update on the Four Elms crossroads and feedback on general road safety concerns HPC have raised. We will update the community on the outcome as soon as we can.

Each year Hever Parish Council have a small amount of funding in order to provide financial assistance to a range of organisations, projects, and activities, which provide services for local residents. The Grant Application form can be found on the hever.org website <http://hever.org/parish-council/hever-parish-council-community-support-grants> or contact me for more information.

Please visit the hever.org website to view more detailed information such as; Agendas, Minutes, Planning, Financial and Audit information. Next Meeting: Tuesday 11th July - Four Elms Village Hall 7.00 pm Planning and Full Council at 7.30 pm

Mrs Rachael Turner

Clerk and RFO

077849 12645 clerk@hever.org



Building & Design Services

Albourne roofing	slating, tiling, flat roofing, repairs	01892 836777
Causeway Joinery	bespoke joinery for the public and trade	01342 850170
Clare Elizabeth	painting and decorating	0777 5328781
G Moss	joiner & builder	07778 440 644
Hever Painters, quality decorating service	heverpainters@gmail.com	07530322629
Jem Pickard	painting and decorating	07850 371558 or 01732 863062
M & M Walker	painting & decorating, plumbing, heating	07774 218 684
Nadia Mulder	art for interiors, murals, paintings etc	07960 610018
Richard A Maslen	Fine furniture and bespoke joinery	07930 341 415
W Smithers & Sons	listed building, conversions, extensions,	01342 850 559

Catering

Gorard Dean Catering -	all events undertaken call Melanie Dean	07710 005 635
------------------------	---	---------------

Cleaning

Housecleans	cleaning, ironing	01959 532 223
Rockport Cleaning	dry carpet & upholstery cleaners	01732 387 046

Commercial Property

Hever Business Centre Office Suites -	Karrison Property	01959 563800
---------------------------------------	-------------------	--------------

Education

Markbeech Nursery	for children 2-5 years	01342 850403
Chiddingstone Nursery		
School	for children 2-5 years	01892 871315

Fitness

Hever Castle Golf Club	golf course	01732 701017
Chiddingstones' Tennis Club		07434841421
Falconhurst Cricket Club	cricket and training sessions	07771 892762
Pilates by Lorna at Four Elms and Ide Hill village halls		07747 628993
Smart Nutrition and Fitness	personal training for midlife women and beyond	0771 8588847
Tennis by Nature,	kids tennis coaching by Gary Markham	07802 842554

Funeral Services

Alex Jones	funeral directors & monumental masons	01732 860047
Eden Valley Woodland Burial Ground on the Kent/Surrey border		07802 630012

Financial advice

Adam Tyrrell	Wealth Management	07769642590
--------------	-------------------	-------------

Garage Services

Stuart Rieman luxury passenger car servicing & repairs		01883 715 037
--	--	---------------

Gardening and landscaping

APF Trees,	tree surgery and garden maintenance	07786 884924
Hever Landscapes	for all your garden projects	01892 740133
French's Fencing	gates, automation, fencing supply & fitting	0779 5551436
R. Bennett	hedges, fencing, grass cutting	01732 862971
Thompson Tree Care Ltd,	tree surgery, tree felling, hedge cutting	07747345815

Health

BDHL private & group health insurance and corporate wellbeing	01892 891900
Paul Marro Cognitive Hypnotherapy www.htherapy.co.uk	01732 808211
Step by Step	foot health practice 07786 038149

Home services

Andy Sayers	electrical services maintenance and repairs	07836 256146
Daren Wood	Chimney sweep, pots and cowl fitted	01959 564263
Pegrum	fuels, boilers, plumbing, solar panels, water/oil tanks	01732 463256
Sure Kill	pest control services	01732 863206

IT

My IT Wizard Ltd	Computer problem solving	07779 285839
MR Computing	computer repairs in your home, no call out charge	01732 590077

Local Produce

Allman Butchers	meat & groceries	01732 863214 or 700288
Falconhurst Farm Shop and deli		01342 850172

Travel, Taxis and bike hire

Country Hire and Go,	electric bike hire and local taxi service	07723054863
Relyon Cars	local taxi company	01732 863 800

Venue Hire and Weddings

Falconhurst Weddings	01342 850526
Markbeech Village Hall	01342 850328

The Danewood Press Ltd

Print • Design • Quality

Your local Printer for Litho • Digital • Wide Format Print

Letterheads • Compliment Slips • Business Cards • Leaflets
Tickets • Swing Tags • Invites • Post Cards • Envelopes
Wedding Stationery • Plain Paper • Brochures • Booklets
Greeting Cards • Large Posters • PVC Banners • Roll up Banners
Canvas Prints • Outdoor Signage Boards • Vinyl Labels

T: 01825 740302 E: sales@danewoodpress.com
www.danewoodpress.com

Isle of Thorns, Chelwood Gate, West Sussex RH17 7LA

Church in June

Owing to the timing of Patronal Festivals, our normal pattern of services differs slightly in June. Please watch out for any late changes with details of services below and also at <https://threespires.wordpress.com/2021/06/08/our-next-service/>

Date & time	Service details	Readings	Sunday
4th June 10am	Patronal Festival at Holy Trinity Markbeech	Isaiah 40:12-17 & 27-31; Psalm 8; 2 Corinthians 13:11-13; Matthew 28:16-20	Trinity Sunday
11th June 8am	BCP Morning Prayer at St Peter's Hever	Job 29:11-16; John 15:12-17	Trinity 1
11th June 10am	Holy Communion at St.Paul's Four Elms with baptism	Job 29:11-16; Acts 11:19-30; John 15:12-17	Trinity 1
11th June 4pm	Forest Church at St.Peter's Hever	Building	Trinity 1
18th June 8am	Said BCP Holy Communion at St.Paul's Four Elms	1 John 3:13-24; Luke 14:16-24	Trinity 2
18th June 10am	Family Service at Holy Trinity Markbeech	The wise man built his house upon the rock	Trinity 2
25th June 10am	Patronal Festival at St.Peter's Hever	Ezekiel 3:22-27; 1 Peter 2:19-25; Matthew 16:13-19	Trinity 3
25th June 3pm	Edenbridge churches Joint service at Rickards Hall		Trinity 3

Our weekly Zoom and in person Bible studies continue on Mondays at 6pm and 8pm and Zoom Evening prayer on Thursdays at 6pm.

For details of all these please contact Simon or see our website or Facebook page.

Please contact any of us if you would like prayer or to talk to someone during this time or any other help.

Rector

Revd.Simon Braid
07802 809849 and
simonbraid@icloud.com

Wardens Hever

Mandy Yarnold
01342 850028

Four Elms

Christina Hodson
01732 700247
Richard Bennett
01732 862971

Markbeech

Lynnie Rowan 01342 850776
Marielou Linklater 01342 850579

Administrator

Ana Roxburgh
beneficeemail@gmail.com

our rector's thoughts

June is a great month for sport: the FA cup, the start of the Ashes series, the Derby and from the start of July Wimbledon. We'll doubtless enjoy marvelling at exceptional and amazing performances. But in the end, there is just one winner and many losers. My own experience at competitive horse riding in the past often ended in humiliating failures!

Modern society puts an unprecedented emphasis on the potential of the individual. A recent study found that the phrases 'believe in yourself' and 'express yourself' occur twice as frequently in modern books than 50 years ago. Whilst it is good to encourage young people to fulfil their potential, there is evidence that the increase in anxiety and depression may in some cases be attributed to the collision of dreams of personal distinctiveness with the realities of life – such as in sport – which rewards only a few.

In the end we all experience failure of some kind. The result is then discouragement, a loss of courage and an unwillingness to take risks.

There are many great quotes about failure, but few better President Theodore Roosevelt's made in 1910 in Paris: "It is not the critic who counts; not the man who points out how the strong man stumbles, or where the doer of deeds could have done them

better. The credit belongs to the man who is actually in the arena, whose face is marred by dust and sweat and blood; who strives valiantly; who errs, who comes short again and again, because there is no effort without error and shortcoming; but who does actually strive to do the deeds; who knows great enthusiasms, the great devotions; who spends himself in a worthy cause; who at the best knows in the end the triumph of high achievement, and who at the worst, if he fails, at least fails while daring greatly, so that his place shall never be with those cold and timid souls who neither know victory nor defeat."

Our church in Hever is dedicated to St.Peter, who failed on a huge scale. He denied Jesus three times, after totally denying that he would ever deny him (see Mark 14:66-72)! Yet Peter the failure met the risen Jesus, was recommissioned by Him, filled with the Holy Spirit and became one of the great pillars of the Church. Was he a failure? Yes and no. Most importantly, he was forgiven, and loved, and defined by God. And that can apply to all of us.

This is the message of the Cross: The tree of shame has become the tree of glory; and, where life was lost, there life has been restored."

God bless you all

Simon

news from the pews

Markbeech

This is being written on Saturday 6th May and my sister and I have been watching the Coronation of Charles III on television since it all began this morning. We both remember 1953 when our parents bought our first tiny black and white television and we watched the Coronation of a very young Queen Elizabeth.

Its been overcast and damp all day and although it was a shame not to see all the magnificence of the procession gleaming brightly in brilliant sunshine, it was rather a relief to binge watch the whole thing from start to finish from the sofa and not feel guilty about not doing anything constructive outside! What a magnificent occasion and how brilliantly as a nation we do it all. The months and probably years of preparation and planning involved is incomprehensible. The Service from Westminster Abbey was simply beautiful and the choice of music inspiring. The bringing together of people from all walks of life and from different nations and different beliefs felt very unifying. Long live King Charles and Queen Camilla.

It is now 7th May and we had a lovely Coronation Service at Four Elms Church with Charles Talbot conducting the choir singing John Rutter's 'For the Beauty of the Earth' accompanied by Tim Higgs on the organ. The children's choir joined in and we had a delightful opening hymn by the young choir accompanied by some very talented young violinists. It was great to see a full church and afterwards we

were treated to a delicious glass of fizz to celebrate.

In the evening, to cap it all, there was a dazzling concert from Windsor Castle to enjoy, celebrating arts and music set off by an amazing light show. There was a definite theme for conserving this planet, which of course, is one of King Charles's great passions.

Lynne Rowan

Churchwarden

Four Elms

A momentous occasion. A coronation of a sovereign and his consort. I hope you enjoyed the spectacular coverage. Here in St. Paul's we celebrated with a wonderful Benefice service, thanks to Markbeech choir, followed by celebratory drinks. It was a joy to have the choral music beautifully sung by both senior and junior choirs, accompanied by our organist Tim Higgs and two young, talented, violinists, under the direction of Charles Talbot. Likewise, we must thank Pauline and Virginia for their beautiful flowers. Thank you to everyone.

No mow May! I wonder how many of you were able to adhere to this ecological request. A neatly mown lawn is a very English habit and considered to be the essence of good gardening. Not the easiest request for those who take a pride in their manicured lawn. But wildlife will love you for it and the wild, natural, flowers really are delightful.

Four Elms@4 (our Family Service) continues for the next few months, with a

break in the summer. It is a friendly family service with activities and refreshments. Do join us at St Paul's. Similarly, "Enjoy a cuppa" in the church continues on the second Tuesday of the month. Please drop in and chat with local friends.

How could I possibly complete my news without a mention of the Four Elms Village Fete. We have a children's coronation crown competition and you are very welcome to wear your own crown to the Fete (dogs as well!!). As usual I am asking politely for home baked cakes for the Tea Tent, bottles for the Bottle Tombola, smart bric a brac and, of course, your presence at the Fete. If you are able to help on the day in any capacity, please leave a message on our landline 01732 700247.

Christina Hodson
Churchwarden

**From the register
Funerals**

24th April at Hever
Janice Elizabeth Green aged 74

Hever

St Peter's will be hosting a table at the meet the village morning on Saturday 3rd June. You can find out about our different types of services, the Friends of St Peter's and our bell ringers.

The next Parish lunch will be held on Thursday 8th June starting at 12.30. We normally have around 24 people and serve soup, fruit and a delicious home- made cake. Everyone in the Parish is very welcome but it would be helpful for catering, if you can, to let us know that you are coming or have any special dietary requirements.

Our Patronal service will be on Sunday 25th June at 10am. This is our yearly celebration of St Peter who was chosen to be patron saint of Hever Parish.

We are looking for volunteers to help with running, setting up and taking down of our Barn Dance and BBQ, can you help? Please contact myself or Ana Roxburgh for more information.

Mandy Yarnold
Churchwarden



gardening

June is often referred to as 'Flaming June'! After one of the wettest, coolest Springs for many a year I think we could all do with some sun on our backs and I know our gardens and plants could do with some warmth! With the less than favourable weather plants have been around three weeks behind where they should normally be. We have first hand experience of this with our Chelsea Flower Show growing this year. It's been one of the toughest years we've encountered for a while!

May is a strange month to hold the premier flower show in the world – the Spring plants are coming to an end leaving a gap in May before the early Summer plants come to fruition. We're normally having to force our plants on under tunnels to give them the warmth and impetus to bloom in time. This year we've had to grow under glass for increased temperatures. The downside to this is that plants can get stretched, leading to soft growth and brittle plants.

Growing for Chelsea is such a time consuming exercise!! We're growing plants upwardly of 5-6 months to look great for one day – judging day!! It's a loss leader for us physically growing the plants, because it's difficult to put a price on the hours spent tending them. Why do it I hear you ask??! It's a great form of advertising. Our graphed up vans heading in and out of the show ground help give exposure to the business. The show has introduced

us to some of the countries top-notch garden designers who use us for their day jobs.

The Chelsea team here at How Green performed miracles and most of what we were asked to grow came to fruition. We were a little stretched as we grew for two show gardens, two trade stands & two balcony gardens. The show gardens were in a new category called 'All About the Plants' with the emphasis heavily on the plants rather than the hard landscaping, so no hiding as far as our plants are concerned! 'The Sadlers Wells East Garden', sponsored by Project Giving Back & designed by Alexa-Ryan Mills and 'The Natural Affinity Garden' for Aspens, designed by Camellia Taylor are two gardens to look out for when the medals are dished out. Chelsea is a fantastic spectacle and the premier garden show in the world. We all know that it's not 'real' gardening, but we can take ideas either plants or layout and introduce them to our own gardens.

Simon Sutcliffe



Benefice monthly rainfall in millimeters

	Jan	Feb	Mar	Apr	May	Jun	Jul	Aug	Sep	Oct	Nov	Dec
FOUR ELMS												
2021	134	46	30	6	56	79	45	54	41	121	21	78
2022	22	55	27	7	58	12	7	36	79	75	201	86
2023	60	9	105	83								
HEVER												
2021	127	42	41.5	5	65.5	84	61	73	41	139	14.5	87.5
2022	16.5	44	22.5	2	62	19	15	39	85.5	58	195	80
2023	80	2	111	93.5								
MARKBEECH												
2021	120	40	51	4	55.5	38.5	48	0	39	141	11.5	86
2022	21	80	23	12	55.5	21	3	0	82	76	226	114
2023	90	4	123	105								

Hall Bookings

Four Elms:

Village Hall

– Kevin Haydon 07787 394 806

Parish Rooms

– John Southworth 01732 700670

Hever

– Mrs Ryan 01732 864168

Markbeech

– Mrs Paige 01342 850328

Councils

Kent County Councillor

Margot McArthur 03000 414817

Margot.McArthur@kent.gov.uk

Sevenoaks District:

Matthew Dickins 07910 328110

Hever Parish:

Rachael Turner

07784 912645 Clerk@hever.org"

The Link Team

Bridget Harris, Joanna Wade, Paul Houlton

email: thelink@hever.org

Telephone 01732 700986 (Bridget) Mobile 07958 919 631 (Joanna)

Address 1 Triangle Cottage, Hever Road, Hever TN8 7NL

Benefice website threespires.wordpress.com **Community website** www.hever.org

The views expressed in the articles in this magazine are those of the authors and do not necessarily represent those of the editorial team. There is no implied approval or recommendation for any service or event advertised in the magazine.

Copy for the **July/August** edition should reach us no later than **16 June**

Subscriptions cost £5 pa if delivered by a volunteer. For payment there are two options:

a) Send a cheque payable to 'The Link' with your address to

1 Triangle Cottage, Hever Road, Hever TN8 7NL or

b) Make a bank transfer or set up a standing order payment to 'The Link' at Lloyds a/c 01057697 sort 30-92-92 with postcode and surname as reference.

A copy of The Link can be viewed in The Link section of the community website www.hever.org



www.pegnum.net



GAS, LPG, OIL & SOLID FUEL

SALES • SERVICING • PLUMBING

RANGE COOKERS • BOILERS • WOOD STOVES

AGA REFURBISHMENT • UNDERFLOOR HEATING

WATER TANKS • OIL TANKS

01732 463256

office@pegnum.net

Unit 12, Gaza Trading Estate, Hildenborough, Kent TN11 8PL



FALCONHURST



**Barn & Marquee
Weddings**

01342 850 526

@ falconhurstestate

www.falconhurst.co.uk

FALCONHURST CRICKET CLUB, MARKBEECH

www.falconhurstcc.co.uk



The Club was founded in 1854 and cricket has been played here ever since. If you are looking for a friendly cricket club to play for – all ages and abilities welcomed – please contact Club Secretary Tom Churton:

07434 841 421 or churtont@gmail.com

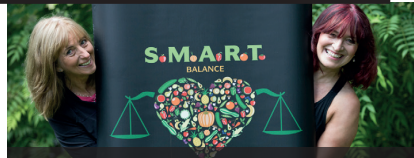


French's Fencing

- Free no obligation quote
- Gates and gate automation
- Fencing supplied and fitted

Contact us on
0779555 1436

www.frenchsfencing.com



Smart nutrition and fitness

- Personal training for midlife ladies and beyond
- Menopause advice
- Nutrition advice
- Relaxation and stretch
- One to one sessions online or in person (when permitted)

Fiona 0771 8588847

www.smartnutritionandfitness.uk

HEVER LANDSCAPES LTD

We offer year-round garden management, regular maintenance or a one-off garden tidy/clearance. Grass cutting, lawn care, hedge-cutting, leaf clearing and jet-washing patios. Construction of vegetable patches, chicken runs, compost bins. Commercial contracts.

We also offer complete landscaping projects, such as patios, retaining walls, all types of fencing, planting schemes, re-seeding and turfing, water features, wooden garden structures, tree surgery, hedge laying and woodland clearance.

PLEASE PHONE KARL ON
01892 740133 or 07909 916909

Est. 1997

WWW.HEVERLANDSCAPES.CO.UK



R. BENNETT

HEDGE LAYING
FENCING
MOBILE SAW BENCH
HEDGE TRIMMING
GRASS CUTTING
ROTAVATING
CONSERVATION WORK
UNDERTAKEN



EDENBRIDGE 862971

**ATS! MICE! COCKROACHES!
MOLES! SQUIRRELS!**

SURE KILL

PEST CONTROL
SERVICE
Member of NPTA



Marlpit Hill, Edenbridge, TN8 6JG
Tel: 01732 863206
Mobile: 07831 300947

Daren Wood CHIMNEY SWEEP

Clean and efficient,
friendly service - pots
and cowls fitted

Telephone: 01959 564263
Mobile: 07885 059023



member of
IACS
Independent Affiliation
of Chimney Sweeps



CAUSEWAY



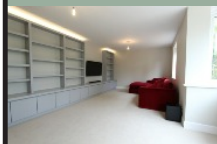
JOINERY

Tel: 01342 850170

Manufacturers of bespoke joinery to the trade & public

www.causewayjoinery.co.uk

E-mail: causewayjoinery@aol.com



THE HEVER BUSINESS CENTRE



- All inclusive monthly rent
- Fast broadband availability
- Plenty of private parking
- Suites for 1 – 6 persons
- Security alarm
- London Bridge (direct)
42mins
- Flexible tenancies
- Conference/meeting room
- No VAT

A SELECTION OF INDIVIDUAL OFFICE SUITES

Available to rent on simple flexible tenancy agreements.

Approached by an attractive private drive, the Hever Business Centre is a distinctive and handsome detached building providing office suites with plenty of private parking.

Formerly Hever Station, the centre now offers bright workspaces with architectural features typical of the Victorian railway era.

TO FIND OUT MORE:

Please contact

David Robinson

01959 563800

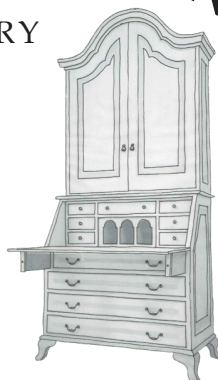
hever@karrison.co.uk



KARRISON
PROPERTY

RICHARD A MASLEN

FINE FURNITURE &
BESPOKE JOINERY



01342 851160 / 07930341415
richardamaslen@btinternet.com
www.richardamaslen.co.uk

ALEX JONES

FUNERAL DIRECTORS

HOME VISITS
AVAILABLE

MONUMENTAL
MASONARY

BEAUTIFUL PRIVATE
CHAPELS OF REST

PRE-PAID
FUNERAL PLANS

Lingfield

01342 832534

1 EAST GRINSTEAD ROAD,
LINGFIELD, RH7 6EP

Oxted

01883 730383

92 STATION ROAD EAST,
OXTED, RH8 0QA

Edenbridge

01732 860047

70 HIGH STREET,
EDENBRIDGE, TN8 5AS

Forest Row

01342 822399

1 ASHDOWN COURT,
FOREST ROW, RH18 5EZ

A TOTALLY INDEPENDENT FAMILY CONCERN

www.alexjonesfuneraldirectors.co.uk

Golden Charter 
Funeral Plans



Dry Carpet Cleaning



DRY CARPET · UPHOLSTERY · HARD FLOORS

Say NO to wet carpets

- ✓ **Spills & Spots - GONE**
- ✓ **Smells & Odours - REMOVED**
- ✓ **Upto 85% of dust & allergens - REMOVED**
- ✓ **Child and pet safe**



Sofa and Chair cleaning



Dry Carpet Cleaning

Get Main Room Cleaned
save **50%**
on all further rooms

Call Chris to arrange a free quotation

01732 387046 or 07827 580012

www.rockportcleaning.co.uk | info@rockportcleaning.co.uk



Kids Tennis Coaching

Inclusive friendly coaching - that's all about fun

age
3-5



Launch Pad

Tues, Wed & Fri:
9.30am-10.15am

age
8-12



Orange & Green ball

Saturdays:
12.30pm-1.30pm

age
12-16



Yellow ball

Saturdays:
1.30pm-2.30pm

£8 per child per session

Develop new skills, gain confidence, make new friends and improve mental & physical well-being.

"Gary is an incredibly patient coach and his inclusive ethos is inspiring."
Dee Easter

Visit www.tennisbynature.com
Email gary@tennisbynature.com
Call/message **07802 842554**

Crockham Hill Tennis Club
Dairy Lane, Crockham Hill,
Edenbridge TN6 6RA

Coached by Gary Markham - LTA accredited tennis instructor, DBS, First Aid, Safeguard, HM Government Prevent Awareness Course certification.



GORARD DEAN

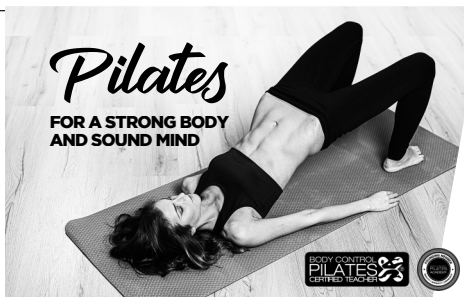
Catering

All events undertaken from
birthdays, christenings and anniversaries
to celebration of life teas

mob: 07710 005 635
email: melanie_dean@gorarddean.com



Melanie Dean
PROPRIETOR



It is a method of exercise that
combines both physical and
mental conditioning that
leads to a strong body and
sound mind.

**"In 10 sessions you'll
feel the difference,
in 20 you'll see the
difference, in 30
you'll have a whole
new body"**

Joseph Pilates

*I am a qualified Level 3
Body Control Pilates
Matwork teacher offering
small group classes or 1:1
sessions for beginners or
advanced level students.*

*The principle of the Body
Control Method is to make
the benefits of Pilates
available to all through high
quality teaching that is both
safe and effective.*



FOR CLASS TIMES AND AVAILABILITY:

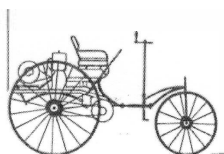
Tel: 07747 628 993

Email: pilatesbylorna@gmail.com

Facebook: [pilatesbylorna](https://www.facebook.com/pilatesbylorna)

Stuart Rieman

Mercedes Benz Specialist
BMW
VW Audi
Porsche



TEL: 01883 715037 & 07831250850

Workshop 2, Little Foxes Farm
Roman Road, Edenbridge TN8 5PN
stuart@rieman.co.uk

Luxury Passenger Car Servicing & Repairs

Art for Interiors

Nadia Mulder

nadiamulder.com

07960 610018

Commissions accepted for
Murals • Paintings • Kids' Rooms
Insured • BA(Hons) Fine Art
nadiamulderartist@gmail.com



Open everyday, this cosy, caring
Nursery School for children ages 2-5yrs
is situated in the beautiful grounds of
Chiddingstone Castle with outstanding staff,
woodland adventures year-round and excellent
support for school transition.

Virtual tours available, please contact us for
more information:

01892 871 315
chiddnursery@btconnect.com
www.chiddingstonenursery.co.uk



A fun, friendly tennis club with
two fantastic all weather courts
located on the beautiful
Chiddingstone Sports ground.

New members always welcome.
For all enquiries contact Adam:
tyrrelladam1@gmail.com 0776
964 2590



Country Hire and Go

07723 054863

PRIVATE HIRE TAXI

AIRPORTS | LONDON | SCHOOL | EXCURSIONS | APPOINTMENTS | SHOPPING | NIGHTS OUT

Female Drivers * Luxury Large 4/6 Pass Vehicles * Pet Friendly * Professional
Reliable * Great Rates * No Late Night Fees * Sunset to Sunrise * 24/7
Cash/Card * Short & Long Distances * Rural Travel * Bespoke Travel

ELECTRIC BIKE HIRE & SALES

DELIVERED & COLLECTED | ROUTE PLANNING | CHOOSE YOUR LOCATION | GIFT VOUCHERS

UK Designed and Built * Variety of styles * Pedal Assist System * UK Road
Legal * Safety and Security Equipment * Route Planning * Gift Vouchers
Integrate our Taxi Service * Groups & Singles

countryhireandgo@outlook.com | www.countryhireandgo.com

Computer problem?

- For home or business.
- Problem solving for Windows, email, viruses, internet connection, broadband and other computer related issues.
- Data and registry recovery. Backup solutions. Remote support.
- Simple and professional advice given on all aspects of personal computing, including purchasing, upgrading and maintenance.
- Computer lessons (Windows, Internet, Microsoft Office...).
- Networking: secure wireless, dLAN, LAN, WAN, Active Directory.
- Bespoke database and software development.

Microsoft®
CERTIFIED
Professional

Scott Harris
BSc Computer Science
Hons, MCP, MCAD.

Microsoft®
CERTIFIED
Application Developer

Mobile: 07779 285839
Email: scott@MyITWizard.co.uk

M & M WALKER

PAINTING & DECORATING
PROPERTY MAINTENANCE SERVICES
CEILING & ROOFING CONTRACTORS
ARTEXING & PLASTERING
PLUMBING • HEATING
CARPENTRY & JOINERY

Tel: 01732 863 155

Mobs: 077 742 186 84



QUALIFIED . EXPERIENCED . INSURED
PROFESSIONAL TREE SURGERY SERVICES

TREE REMOVAL
CROWN REDUCTION/
THINNING
PRUNING
TAPPING

WOODLAND MANAGEMENT
STUMP GRINDING
SITE CLEARANCE
HEDGE CUTTING
LOGS

CONTACT ARCHIE FOR A FREE QUOTE
07786 884 924
APFTREES@GMAIL.COM

WINNER OF THE ASSOCIATION OF
NATURAL BURIAL GROUNDS

'BEST BURIAL GROUND IN THE SOUTH EAST 2023'



An award-winning beautiful, green,
natural burial ground located on the
Kent/Surrey border close to London.

www.edenvalleyburials.org.uk

07802 630012

contact@edenvalleyburials.org.uk

ANDY SAYERS

ELECTRICAL SERVICES

DOMESTIC AND COMMERCIAL

Electricity in safe hands

- Installations, rewires, board upgrades
- Fault finding, maintenance, repairs
- Inspection and testing reports
- Portable appliance testing (PAT)
- Qualified to BS 7671 2018 18th Edition
- Building regulations part P compliant
- Prompt, reliable and competitive rates

T. 07836 256 146 E. andysayers@gmail.com

www.andysayerselectrical.com



Clare Elizabeth



Painting and
Decorating
Services

Reliable
Local
Friendly

0777 532 8781

clareelizabeth100@gmail.com



W. SMITHERS & SONS

EST. 1955

OLD MILL YARD, HIGH STREET, COWDEN, KENT, TN8 7JJ

TEL 01342 850559 FAX 01342 850981

EMAIL COLIN@WSMITHERS.CO.UK

WWW.WSMITHERSANDSONS.CO.UK



Conversions, extensions, listed buildings, joinery, plumbing and heating,
kitchens and bathrooms, electrical, roofing,
maintenance and repairs and decorating.
Covering all types of building work.



ALBOURNE ROOFING

• Domestic • Commercial •
Industrial

Slating / Tiling / Flat Roofing

**All Maintenance & Repairs
& Property Renovations**

For Free Estimates & Advice from
City and Guilds Qualified Tradesmen

T: 01892 836777

M: 07767 893 772

painting & decorating by jem pickard

your local tradesman
free estimates & consultations
competitive prices
highest quality guaranteed
expert & friendly service
fully insured

jempickard@btinternet.com
www.jempickardpainting
decorating.co.uk
www.facebook.com/
jempickardpaintingdecorating



**07850 371558
01732 863062**

Established
Since 1981



JOINERS & BUILDERS LTD

**LOFT CONVERSIONS, EXTENSIONS
TIMBER FRAME BUILDINGS & BESPOKE JOINERY**

**Telephone: 07778 440644
Email: g.m055@icloud.com
www.gmjoinery.com**

HOUSECLEANS

Weekly, monthly or just when you need a bit of extra help,
We will clean your house to the highest standard, do your ironing
and make up your beds.
Only the best quality products used – Eco friendly products available.

Moving house?
We can clean before you move in or after you move out.

For more details call

01959 532 223

07706 868 772

debbiehousecleans@gmail.com

ENJOY LIFE – LEAVE THE CLEANING TO US!

(And we're happy to walk the dog and feed the cat too)

Step by Step Foot Health Practice



Member of British Association of Foot Health Professionals

**Step by Step provides a highly professional foot care service,
which is fully mobile, attending to all your foot care needs
within the comfort of your own home.**

**For an appointment or more information telephone:
07786 038149 – Michelle Hogan MCFHP**

THE WATERSIDE

BAR | RESTAURANT | TERRACE

AT HEVER CASTLE GOLF & WELLBEING



FOR GOLFERS AND NON GOLFERS

Enjoy Breakfast, Lunch and Drinks

To find out more email:
waterside@hevercastle.co.uk

AN EXPERIENCE TO REMEMBER

[hevercastle.co.uk/waterside](https://www.hevercastle.co.uk/waterside)



WHO WE ARE:

TALK TO US

Romary House
26 Church Road
Tunbridge Wells,
Kent,
TN1 1JP
01892 891900
www.bdhl.co.uk
enquiries@bdhl.co.uk

INDEPENDENT HEALTH & GROUP RISK CONSULTANTS

EMPLOYEE BENEFITS, INDIVIDUAL & FAMILIES SPECIALISTS

IMPARTIAL, BESPOKE, KNOWLEDGEABLE SERVICE

PRIVATE MEDICAL
INSURANCE

INTERNATIONAL MEDICAL
INSURANCE

EMPLOYEE ASSISTANCE
PROGRAMMES

LIFE INSURANCE

HEALTH CASH PLANS

KEYMAN INSURANCE

INCOME PROTECTION

EMPLOYEE BENEFITS

HEALTH SCREENING

CRITICAL ILLNESS COVER

BUSINESS PROTECTION

DENTAL INSURANCE

EXISTING POLICIES REVIEWED AND NEW ENQUIRIES WELCOME

BDHL are regulated in the UK by the FCA No: 304127 and the Jersey FCSC No: 0012

BDHL are registered under the Data Protection Act 1998 No: A2036134



FALCONHURST

F A R M S H O P



OPENING TIMES

MON - FRI 10 - 5

SAT 10 - 3

SUN CLOSED



COWDEN POUND ROAD

MARKBEECH

TN8 5NR

01342 850 172



**Felling - Reductions - Thinning - Stump Grinding
Hedge Cutting - Seasoned Logs**

Telephone: 07747 345 815

Email: thompsontreecareltd@gmail.com



the nature of learning

Based at High Buckhurst Cottage, Mark Beech, we run it as a woodland school, offering outdoor fun and learning and giving the children the freedom and space to be themselves, to run explore, swing, discover, climb, to be creative in a safe and beautiful setting.

Our delightful shepherds hut is on site and has all necessary facilities as well as a warming wood burning stove.



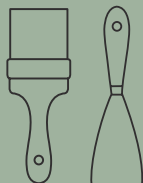
**Monday to Friday 9-12.15pm.
Lunch club available until 1.30pm**

**For further details contact:
Manager: Ms Fiona Baxter 07722497657
email markbeech_nursery@hotmail.co.uk
Owner: Mrs Ann Roberts Cleeve
01342 850403**

Adam Tyrrell Wealth Management

Investment Planning | Inheritance Tax Planning
Retirement Planning | Intergenerational Planning

Mob: 0778 964 2590
Email: adam.tyrrell@sjpp.co.uk
Website: www.adamtyrrellwm.com





Hever Painters

QUALITY DECORATING SERVICE

Home in need of a little TLC?
Struggling to finish that DIY project..?

- Reliable, honest service
- Finest tools and materials
- City & Guilds recognised qualification
- Respectful of your home and space
- Experienced • Female-led • Locally based

heverpainters@gmail.com 07530 322 629  



T. Allman Butchers Limited

High Class Family Butcher

**49 High Street, Edenbridge
Tel: 01732 863214**

***Home-killed meat
Free local delivery***

YOUR LOCAL BUTCHER

Rely On 50 YEARS
CARS EDENBRIDGE
01732 863800



**PRIVATE HIRE • COURIER SERVICE
AIRPORTS**

**WEDDINGS • ACCOUNT WORK
MINIBUSES • LUXURY VEHICLES**

4-8 SEATERS AVAILABLE • SCHOOL RUNS

**AVAILABLE 24 HOURS A DAY,
7 DAYS A WEEK ON PRE-BOOKINGS**

**DRIVERS
WANTED**

The Kiosk,
Station Approach,
Edenbridge
TN8 5LP

**DRIVERS
WANTED**

www.relyoncars.co.uk

June diary

Until 10 November

Exhibition: Catherine and Anne: Queens, Rivals, Mothers, Hever Castle

25 May **Parish Assembly,** Markbeech Village Hall 7pm

29 May **Falconhurst NGS Open Garden** 11am – 5pm 2

June (until 18th) **Art in June**

2 June **Wildlife Gardening Club, Wildflowers for Pollinators,**
Bore Place, free 10-1pm

3 June **Meet the Village,** Hever Village Hall 10.30 - 1pm

8 June **Hever Parish Lunch,** Hever Village Hall 12.30pm

13 June **“Enjoy a Cuppa”** at Four Elms Church

17 June **Traditional Craft Fair,** Eden Valley Museum 10am – 2.30pm

17 June **Chamber Choir concert, Stile Antico,**
Edenbridge Parish Church –7pm

17 June **Music for a Summer evening,** Forest Row Parish Church 7.30pm

24 June **Dinner Jazz,** Hever Castle Golf Club 7.30 pm

1 July **Hever School Fete,** Parish Field Hever 11.30 – 3.30pm

7 July **Wildlife Gardening Club, Camera Trapping,** Bore Place, free 10-1pm

8 July **Four Elms Village Fete,** Church Meadows Four Elms from 1pm

11 July **Hever Parish council meeting,** Four Elms Village Hall 7.30pm

13 July **Hever Parish Lunch,** Hever Village Hall, 12.30pm

15 Aug **Family Fun Day,** Four Elms Field

9 Sept **Barn Dance** Hever

30 Sept **Recital of vocal solos and duets,** Withyham Parish Church - 7pm

21 Oct **Wind Quintet, The Ormonde Ensemble**
Edenbridge Parish Church – 7pm